

Children's Heart Foundation



Annual Report 2011-2012

Address : Flat A, 5th Floor,
122 Pokfulam Road, Hong Kong
Tel : 2553 0331
Fax : 2553 4886
E-mail : chf@childheart.org.hk
Website : www.childheart.org.hk

Children's Heart Foundation

Table of contents

Contents	Pages
Notice of Annual General Meeting	2
Rundown of Annual General Meeting 2011-2012	3
Regulation of Annual General Meeting 2011-2012	4
Introduction	5
Services	6 – 8
Organizational Structure	9 – 11
Message from the Chairlady	12 – 15
Key Members Activities 2011-2012	16 – 19
Heart Health Series: Care Our Heart 2011-2012 (School Exhibition and Talk)	20 – 21
Key Fundraising Events 2011-2012	22 – 24
Key Medical Programme 2011-2012	25
Statistics Report	26 – 32



Children's Heart Foundation

CHILDREN'S HEART FOUNDATION

NOTICE is hereby given that an Annual General Meeting of the Foundation will be held at Happy Valley Suite, 2nd Floor, Hong Kong Football Club, No.3 Sports Road, Happy Valley, Hong Kong at 2:00 p.m. on Saturday, the 18th day of August 2012 for the following purposes :

1. To consider and approve the Audited Accounts of the Foundation for the period from 1st January 2011 to 31st December 2011 together with the Executive Committee's and Auditor's Reports attached thereto;
2. To elect Executive Committee Members;
3. To appoint PricewaterhouseCoopers as Honorary Auditors; and
4. To transact any other competent business.

By Order of the Executive Committee


Secretary

Date : 19 July 2012

A Member entitled to attend and vote at the Meeting is entitled to appoint a proxy to attend and vote on his behalf. A proxy need not be a Member.

Children's Heart Foundation

Rundown of Annual General Meeting

2011-/2012

Time	Content
2:05 - 2:10pm	Confirm the agenda and rules of the meeting
2:10 - 2:25pm	EXCO Report by Ms. Jenny Cheng
2:25 - 2:35pm	Financial Report by Ms. Monica Woo
2:35 - 2:40pm	Question and Answer on the EXCO Report and Financial Report
2:40 - 2:45pm	Approve the EXCO Report & Financial Report
2:45 - 3:00pm	Election of Executive Committee Members for Year 2012-2013 a. Nomination of Candidates b. Polling for CHF EXCO 2012-2013
	Appointment of Honorary Auditor
	Announcement of new Honorary Advisers
3:00 - 3:05pm	EXCO Group Photo
3:05 - 3:20pm	Award Presentation
3:20 - 3:30pm	Performance of Children's Choir
3:30 - 4:15pm	Reception Cocktail

Children's Heart Foundation

Regulation of Annual General Meeting

2011-2012

1. Run-down and regulation are listed on the Meeting documents.
No amendment shall be made unless there is proposed.
2. The Executive Committee shall comprise not less than five and not more than eleven members.
3. Every member, who joined the CHF on or before 18 August 2012 and aged 18 or above, shall have one vote on each discussing issue.
4. Only those with valid voting card can vote.
5. Each agenda should be proposed and seconded before voting.
6. If being appointed, please vote with your own valid voting card and the valid voting card(s) of the proxy.
7. When voting, please vote according to the instruction of the Chair.
Please do not put the voting card down until counting is finished.



Children's Heart Foundation

Introduction

The Children's Heart Foundation (CHF) was originally formed as a mutual support group for parents with children suffering from congenital heart disease. The parents realized that sharing experiences and information was a great benefit to all concerned. In 1994, with the support of doctors, nurses and medical social workers at the Cardiac Paediatric Unit of the Grantham Hospital, the CHF was founded as a registered charitable organization devoted to supporting children suffering from heart disease and their families.

Over the years, the Foundation has grown from a small group of volunteers into an organization which has a team of full-time staff and subcommittees specializing in different issues related to children with heart disease. As our organization depends entirely on public support and donations, the volunteers and supporters remain the backbone of the Foundation and the reason for its continuous success.

Objectives

1. To provide financial and psychological support to families with children suffering from congenital heart disease.
2. To raise public awareness about congenital heart disease.
3. To support the development of technology and methods to detect and treat congenital heart disease.

Children's Heart Foundation

Services

1. Financial support for families

Patients have to pay for treatments and equipment such as special catheters and pacemakers which are not covered by government. The CHF has helped hundreds of less well-off families through its Medical Financial Support Scheme to ensure children receive appropriate treatment.

2. Purchase of medical equipment

New technology and medical breakthroughs are an essential part of improving treatment. The CHF helps upgrade existing facilities and services by purchasing the latest high-tech equipment, supplementing the services provided by the public hospitals.

3. Counseling services

All parents expect their baby to be born healthy. When they are told their child has a heart problem, the first reaction is fear; fear of the unknown and fear about the future. Mum and dad are full of questions - What's wrong with my baby? What will happen next? Why did this happen? What treatment does the child need? The CHF provides counseling and support services for parents who need help.

4. House of the Heart

When a child is admitted to hospital for heart surgery or treatment, parents face enormous difficulties and endure great stress. While parents try to look after their child as best they can, they also need a place to rest. The House of the Heart (HOH), just a few minutes walk from Queen Mary Hospital, allows parents to get a good night's sleep and spend more time with their children. They can freshen up during the day or just take time out to relax. It also reduces the amount of time parents spend travelling to and from the hospital.

Services

5. Educational programmes

Most people have never heard of congenital heart disease, despite it being one of the most common congenital problems among children. Through various educational programmes and exhibitions, the CHF promotes public awareness about heart health and raises support in the community for these special children. The CHF also organises talks so parents can learn more about caring for children with heart disease, nutritional issues and child development.

6. Parents support group

There are many different types of problems associated with congenital heart disease and the CHF's parents support group meets regularly to provide a channel to discuss issues of concern. Caring for these special children can be difficult and stressful, so talking to people who have the relevant experience, knowledge and understanding can give parents a sense of belonging. Parents can often feel helpless, so it is a real comfort to be able to share their anxiety with others who have been through a similar experience. The CHF works to promote self help and mutual support between these families. Parents can share their experiences at the wards, in the support group meetings and during other activities. This is an effective way of enhancing communications between parents at a very difficult time.

7. Ward visits

Hospitalisation is always stressful and painful for both the children and their families. Unfortunately, spending time in hospital is a common occurrence for children with heart disease. Ward visits by professional teams and trained volunteers are essential as they stimulate the children's development and facilitate positive thinking among parents. Volunteers help with artwork, reading and storytelling, while parent volunteers share their personal experiences, giving other parents the confidence to face the challenges ahead.

Services

8. Developmental programmes

Because of their physical limitations, some children with heart disease encounter learning problems which affect their education, social lives and psychological development. The CHF organises a variety of programmes like the children's choir, art workshops and leadership training programmes. As they have a lot in common, the children feel comfortable taking part in these activities together. The CHF also organises outdoor and indoor activities such as camping to strengthen the parent-child relationship and boost self confidence.

9. Medical development and exchange

The CHF brings overseas surgeons and cardiologists to Hong Kong to share their experience with local medical staff. This is of vital importance as it helps staff keep up with all the latest advances in treatment and medical technology.

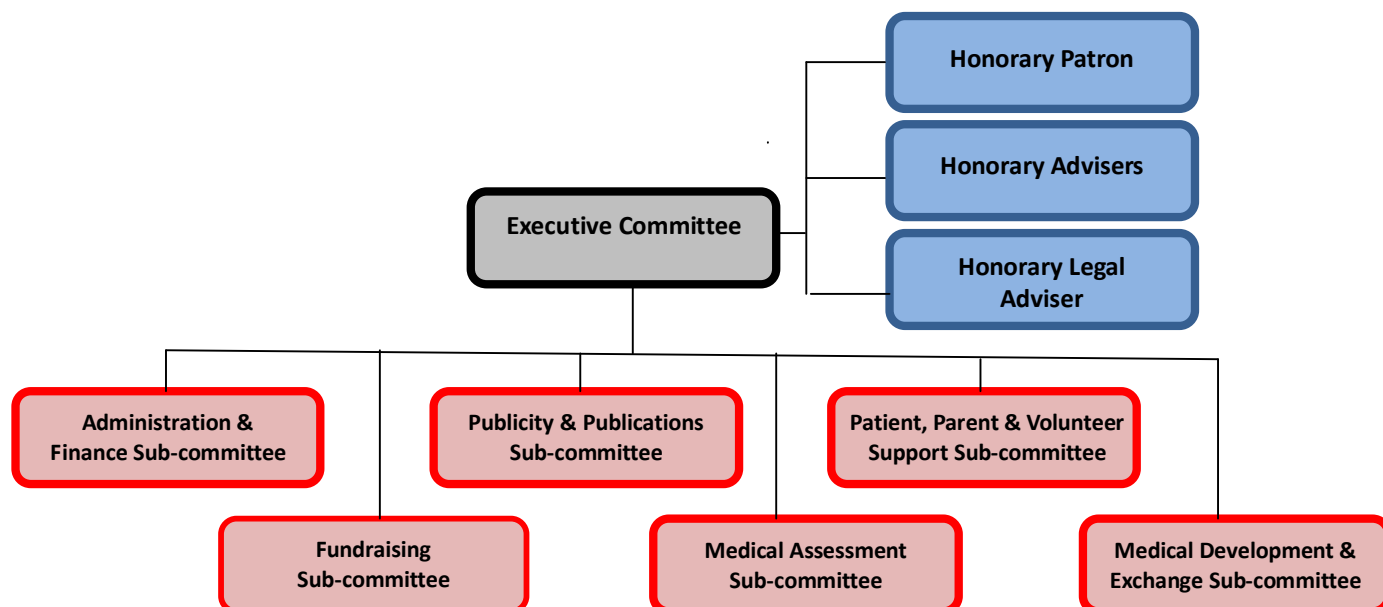
The CHF also sponsors medical staff to receive further training and attend local and overseas seminars and conferences. Through Queen Mary Hospital, the CHF now provides funding so medical staff from Mainland China can receive training in Hong Kong.

10. Research

The CHF provides funding for research into congenital heart disease with an aim to promote medical advancement.

Children's Heart Foundation

Organizational Structure 1



Hon. Patron : The Hon. Selina CHOW, JP
 Hon. Advisers : Ms. Vivien V.M. CHONG
 : Dr. C.C.LUK
 : Mr. Duncan W. PESCOD, JP
 Hon. Legal Adviser : Mr. Andy KUNG

Executive committee members 2011-2012

Chairlady : Ms. Jenny Y.F. CHENG
 Vice Chairman : Dr. Adolphus K.T. CHAU
 : Ms. Christine W.C. HO
 Secretary : Ms. Angela M.Y. LAU
 Treasurer : Ms. Monica K.T. WOO
 Members : Ms. W.K. AU
 : Ms. Rachel S.P. CHEUNG
 : Ms. Connie Y.L. LAU
 : Ms. Yasmin MAHBOOBANI
 : Dr. K.T. WONG
 : Dr. T.C. YUNG
 Hon. Auditor : PricewaterhouseCoopers

(Listed in alphabetical order)

Children's Heart Foundation

Organizational Structure 2

Administration and finance sub-committee 2011-2012

Chairperson	:	Ms. Connie Y.L. LAU
Members	:	Mr. Kinze K.S. LEUNG
	:	Mr. Jack Y.H. LO
	:	Ms. Monica K.T. WOO

Fundraising sub-committee 2011-2012

Co- Chairperson	:	Ms. Yasmin MAHBOOBANI
	:	Dr. David ZWEIG
Members	:	Ms. Christie M.S. WO
	:	Ms. Anna H.M. YAU

Publicity and publications sub-committee 2011-2012

Chairperson	:	Dr. K.T. WONG
Members	:	Mr. Charles Y. K. LEE
	:	Mr. Kinze K.S. LEUNG
	:	Mr. Jack Y.H. LO
	:	Mr. Jonathan MARSH
	:	Ms. Christine M.W. YIP

Medical assessment sub-committee 2011-2012

Consultant	:	Dr. Adolphus K.T. CHAU
	:	Dr. T.C. YUNG
Chairperson	:	Ms. Angela M.Y. LAU
Member	:	Ms. Christine W.C. HO

(Listed in alphabetical order)

Children's Heart Foundation

Organizational Structure 3

Patient, parent and volunteer support sub-committee 2011-2012

Chairperson	:	Ms. Christine W.C. HO
Members	:	Ms. Rachel S.P. CHEUNG
	:	Ms. Helen L.S. HO
	:	Mr. Nelson C.C. HO
	:	Ms. Connie Y.L. LAU
	:	Mr. Kinze K.S. LEUNG
	:	Mr. Jack Y.H. LO
	:	Ms. Lolitter S.K. NG
	:	Ms. Suyi F.Y. SO
	:	Ms. Sony H.N. SO
	:	Mr. Ken M.K. WONG
	:	Ms. Monica K.T. WOO
	:	Mr. Charles K.B. YEE

Medical development and exchange sub-committee 2011-2012

Chairperson	:	Dr. Adolphus K.T. CHAU
Members	:	Ms. W. K. AU
	:	Ms. Christine W.C. HO
	:	Ms. Angela M.Y. LAU
	:	Dr. T.C. YUNG

(Listed in alphabetical order)



Children's Heart Foundation

Message from the Chairlady

Coming of age Innovating stage

2012 has been a special year for the Children's Heart Foundation. We have made great strides, further strengthening our services, initiating new projects and begun the process of implementing the foundation's development plan. Working with passion, commitment and devotion, we have improved the breadth, depth and quality of our services. It's a time of innovation. I'm proud to say that the CHF is in a good position to take another big step forward.

We are continuing our efforts on the medical sponsorship and development fronts. Last year, our medical sponsorship totalled around HK\$1.8m, which went to help 53 children. Our sponsorship of medical equipment like the nitric oxide machine, portable echo machines, and the electric beds for small child ensures the best medical treatment, while the sponsorship for expensive drug enhances the quality of life for children with complicated congenital heart diseases. We are also hoping that our research sponsorship on Genetic Diagnosis of Sudden Arrhythmia Death Syndromes will lead to some breakthroughs.

Using a patient-centric approach, we focus not only on medical treatment but also recovery and rehabilitation. Following the success of the Self Understanding and Acceptance workshop and the Overnight Adventure Camps, we extended the programme through other workshops including the Learn through Play for parents and children, the Road to Rehabilitation and a talk on Chinese medicine called How caretakers can stay healthy. We introduced the Home Tutorial Scheme to promote social skills and patients' academic learning. We diversified into Play Workshop %Learn through Play+ to empower parents, while the %Youth Cooking Gathering+ nurtured patients' skills and interests. These programmes have delighted us. They empower parents and equip patients with essential skills and knowledge. The personal development of our children helps them meeting the daily challenges they face and also has a beneficial long term effect on their lives.

Children's Heart Foundation

Message from the Chairlady

Coming of age Innovating stage

Extending a fundamental element of the CHF – the human touch – we have further strengthened the ward visiting programme in terms of frequency and quality. Trained volunteers, including teachers and experienced parents, visit the hospitalised kids, whilst the CHF social workers visit the ward every two days to provide immediate psychological support and counseling services. We have doubled the number of outreach families to 365 in the last 12 months.

It is encouraging to know that 90% of our children with congenital heart disease can recover. Their life expectancy is longer and longer that some will require follow-up throughout their lives. To meet the ever increasing demands on CHF services, we keep strengthening the existing services and have started preparing for further development.

One of our key innovations is the establishment of the CHF Patient & Parent Resource Centre (CHF PPRC), which is proposed to be located in Kowloon East. The CHF PPRC will specialise in paediatric cardiac rehabilitation services. The location in Kowloon East will be accessible for both out-patients and inpatients of the future Centre of Excellence in Paediatrics (CEP). Services at the new centre will include counseling and group therapy for the regular patients and the parent support group as well as skill training programmes. There will also be a resources library covering congenital heart disease, a toy library and a cardiac and heart health education centre. This will offer a stable, convenient platform for those who need our services, while allowing people to keep in touch and network.



Children's Heart Foundation

Message from the Chairlady

Coming of age Innovating stage

The fundraising work of the CHF plays an essential role in our service. Luckily, we continue to receive the support from our corporate and charitable funds.

It is my pleasure to report that we have some further breakthroughs in the fundraising. We introduced the campaigns like %Lucky Money Wishes+ and %RED Gift+ which were well supported by individuals, while we managed to develop new partnerships organise creative fundraising campaigns for the CHF. We wish these campaigns every success.

It is good to share all this good news about CHF's successful services and fundraising. This would be impossible without the staunch support from the corporates, volunteers and the members including YOU. Yet, I would also like to thank the Hon. Patron . Mrs. Selina Chow, our Legal Advisor-Mr. Andy Kung, our Hon. Advisers -Dr. C C Luk and Ms Vivien Chong, Mr. Duncan Pescod, our Hon Auditor PricewaterhouseCooper for their loyal support.

In particular, please join me in giving a big clap to our Executive Committee, the Subcommittee members for their devotion and dedication.



Children's Heart Foundation

Message from the Chairlady

Coming of age Innovating stage

All of us have worked to help children with heart disease. Our love for these children has enabled us to overcome all the challenges. Our innovation and creativity will help us write a new chapter for the CHF which will allow us to make life even better for children with heart disease and their families.

Thank you very much!

Jenny Cheng

Children's Heart Foundation

Key Members' Activities 2011-2012

2011

	Month	Event
1	Jan	Friends of CHF 2010: Presentation Ceremony and Gathering
2	Jan	Educational Talk at St. Francis Xavier's School, Tsuen Wan
3	Feb	New Year Ward Visit
4	Feb	2011 Baby Show in Spring and Child Growth Education Expo
5	Feb . May	CHF Children Choir Phase 1
6	Mar	New Year Gathering
7	Mar	Children @ Disneyland
8	Mar	Bakery Fun
9	Mar	Training Workshop for Ward Visits
10	Apr	Golf Exploration
11	Apr	Caring Company NGO Partnership Day 2010-2011
12	Apr	CHF Newsletter (Spring)
13	May	"Love to Encourage+Music Concert
14	June	Leadership Adventure Training Camp
15	June	ABC with Secondary Students
16	June	BUPA Global Challenge . Walk for Your Health at Ocean Park
17	June	Frederique Constant My Clock+Design Competition
18	July	Summer Camp 2011

Children's Heart Foundation

Key Members' Activities 2011-2012

2011

	Month	Event
19	July	McDull and Mrs. Mak Wax Figure Opening Ceremony
20	July	Indoor Shooting Leadership Training Programme
21	July	Djembe Exploration
22	July . Aug	Workshop: Self Understanding and Acceptance
23	July . Sept	Music Workshop
24	July - Oct	Children's Ambassador 2011
25	July . Dec	CHF Children Choir Phase 2
26	Aug	WASAO's Premiere
27	Aug	Art Jamming
28	Aug	Frederique Constant Charity Sales
29	Aug	Overnight Adventure Camp
30	Aug	Visit to Cathay Pacific
31	Aug	Frederique Constant %Be a Little Watchmaker+Workshop
32	Aug	CHF Newsletter (Summer)
33	Sept	Heart Health Series: Information Corner at Island Resort Mall
34	Sept	Annual General Meeting 2010-2011
35	Sept	CHF Academis Award Scheme 2011
36	Nov	Connect the Hearts with Heart

Children's Heart Foundation

Key Members' Activities 2011-2012

2011

	Month	Event
37	Dec	Credit Suisse Ward Visit
38	Dec	Christmas Party 2011
39	Dec	CHF Newsletter (Winter)
40	Annual	Ward Visits

2012

	Month	Event
1	Jan	Planting in the South
2	Feb	%Write Your Heart+Design Competition
3	Feb	Chinese New Year Ward Visit
4	Feb	New Year Gathering
5	Feb	Credit Suisse Ward Visit
6	March	Friends of CHF: Presentation Ceremony and Gathering 2012
7	March	%Learn through Play+Parent-Child Workshop
8	April	Youth Cooking Gathering
9	April	DIY the Easter Egg
10	April	Talk on Chinese Medicine-Caretakers Stay Healthy
11	April	Make the Cupcake Together

Children's Heart Foundation

Key Members' Activities 2011-2012

2012

	Month	Event
12	April . June	Home Tutorial Scheme
13	April . June	CHF Children Choir . Phase 1
14	May	Handmade Leather Workshop
15	May	CHF Newsletter (Spring)
16	May	Caring Company NGO Partnership Day 2011-2012
17	June	Morgan Stanley Volunteers Services
18	July	%Saltimbanco - Cirque Du Soleil+sponsored by Credit Suisse
19	July	Summer Camp 2012
20	July	Children Overnight Adventure Camp
21	July	%Set the guideline for your child+ParentsqTalk
22	July . Aug	%Master Talk+Workshop
23	July . Aug	CHF Workshop: Road of Rehabilitation
24	July - Dec	CHF Children Choir . Phase 2
25	Aug	Youth Overnight Adventure Camp
26	Aug	Annual General Meeting 2011-2012
27	Aug	Academic Award Scheme 2012
28	Aug . Oct	Rainbow Dance Ranger
29	Aug . Oct	Children Ambassador 2012
30	Annual	Ward Visits



Children's Heart Foundation

Heart Health Series: Care Our Heart 2011-2012 (School Exhibition and Talk)

May - Dec 2011

	Participating School	Exhibition	Talk
1	Canossa Primary School (San Po Kong)	★	
2	Carmel Secondary School		★
3	Chinese International School	★	
4	Fung Kai Liu Yun-Sum Memorial School	★	★
5	Island Road Government Primary School	★	★
6	King Lam Catholic Primary School	★	
7	Lingnan Primary School & Kindergarten	★	★
8	Marymount Secondary School	★	★
9	PLK Dr. Jimmy Wong Chi-Ho (TSV) Primary School		★
10	Pooi To Primary School		★
11	St. Paul's Co-educational College	★	★
12	TWS St. Bonaventure Catholic Primary School		★
13	Wong Tai Sin Catholic Primary School	★	
	Total	9	9

Children's Heart Foundation

Heart Health Series: Care Our Heart 2011-2012 (School Exhibition and Talks)

Jan – July 2012

	Participating School	Exhibition	Talks
1	Diocesan Girls' School		★
2	Hennessy Road Government Primary School	★	★
3	Ning Po College		★
4	Pak Tin Catholic Primary School	★	★
5	S.K.H. Fung Kai Millennium Primary School	★	
6	S.T.F.A Seaward Woo College	★	★
7	St. Stephen's College Preparatory School		★
8	Stewards Pooi Kei Primary School		★
9	Tsung Tsin Primary School and Kindergarten		★
10	Ying Wa Girls School	★	★
11	Ying Wa Primary School	★	
	Total	6	9

Children's Heart Foundation

Key Fundraising Events 2011-2012

2011

	Month	Event
1	Jan	North East Mountain Marathon 2011
2	Jan	Charity Sales at Educational Talk at St. Francis Xavier's School, Tsuen Wan
3	Jan . Apr	Fuji Xerox (HK) Customer First Care Programme
4	Feb	Charity Sales at 2011 Baby Show in Spring and Child Growth Education Expo
5	Feb	White & Case Charity Sales 2011
6	Feb	Charmonde Watches Charity Programme
7	Apr	Bulk Mailing Campaign: CLP
8	Apr	HKU St. John's College RTI Marathon
9	May	Fitness First International Week
10	May . Oct	Nicenoon Far East %Germfree 24+Charity Sales
11	June	BUPA Global Challenge . Walking for Your Health
12	June . Sept	Frederique Constant . Charity Campaign
13	June . Oct	CHF Donation Box - ToysR+Us
14	Aug	Bulk Mailing Campaign: DBS
15	Aug . Oct	CHF Donation Box - JUSCO
16	Sept	%Share My Song+of CRHK, nominated by Ms. Toby Leung
17	Sept	CHF Donation Box - Free Duty

Children's Heart Foundation

Key Fundraising Events 2011-2012

2011

	Month	Event
18	Sept . Oct	Pearls Mosquitout Bracelet Charity Sales
19	Oct	Heart-to-Heart Charity Walk 2011
20	Nov	Funfair at Chinese International School
21	Annual	SCB Flea Market Donation
22	Annual	Corporate Donation Project 2011 - ❖ Hasbro Far East Charitable Programme ❖ Operation Santa Claus 2011 ❖ The Ohel Leah Synagogue Charity 2011
23	Annual	Fuji Xerox (HK) In-kind Donation
24	Annual	Placing CHF Donation Box
25	Annual	CHF T-shirt Charity Sales
26	Annual	Greeting Card Charity Sale

2012

	Month	Event
1	Jan	RBS Giving Program
2	Feb	Lucky Money Wishes Campaign
3	Feb	HKYMCA Charity Campaign
4	March	Colour My World Charity Show

Children's Heart Foundation

Key Fundraising Events 2011-2012

2012

	Month	Event
5	Mar . Jul	DVD Charity Sales of the Luxe Manor
6	April	“Share My Song+of CRHK, nominated by Ms. Vangie Tang
7	May	OOCL Charity Campaign
8	June	The Roche Children Walk 2012
9	Jun . Oct	Toys+R+Us Placing Donation Box
10	Jun 2012 . Mar 2013	50 th Anniversary of Old Master Q Charity Campaign
11	Oct	Heart-to-Heart Charity Walk 2012
12	Dec	Alfestco Little Christmas Hat Campaign
13	Annual	Corporate Donation Project 2012 - ❖ Apple Daily Charitable Foundation ❖ Hasbro Far East Charitable Programme ❖ The Ohel Leah Synagogue Charity 2012
14	Annual	Placing CHF Donation Box
15	Annual	CHF T-shirt Charity Sales
16	Annual	Greeting Card Charity Sale
17	Annual	Donation for a RED gift set campaign

Children's Heart Foundation

Key Medical Programme 2011-2012

2011

Month	Project
Apr	14 th ASEAN Paediatric Congress and the 3 rd Asia Paediatric Otolaryngology Meeting Medical Exchange+
July	Purchase of 10 modern electric hospital beds for small children suffering from congenital heart problems
Aug	Research Sponsorship: Stopping SADS-stories from Happening . Genetic Diagnosis of SADS (Sudden Arrhythmia Death Syndromes)
Oct	Service Enhancement and Development project for the Department of Paediatric Cardiology of Queen Mary Hospital
Dec	Donation of a set of portable Ultrasound Machine System
Dec	Donation of a set of Nitric Oxide Delivery System
Annual	Medical Financial Support Scheme (MFSS)
Annual	Heart Valve Programme (Homograft)

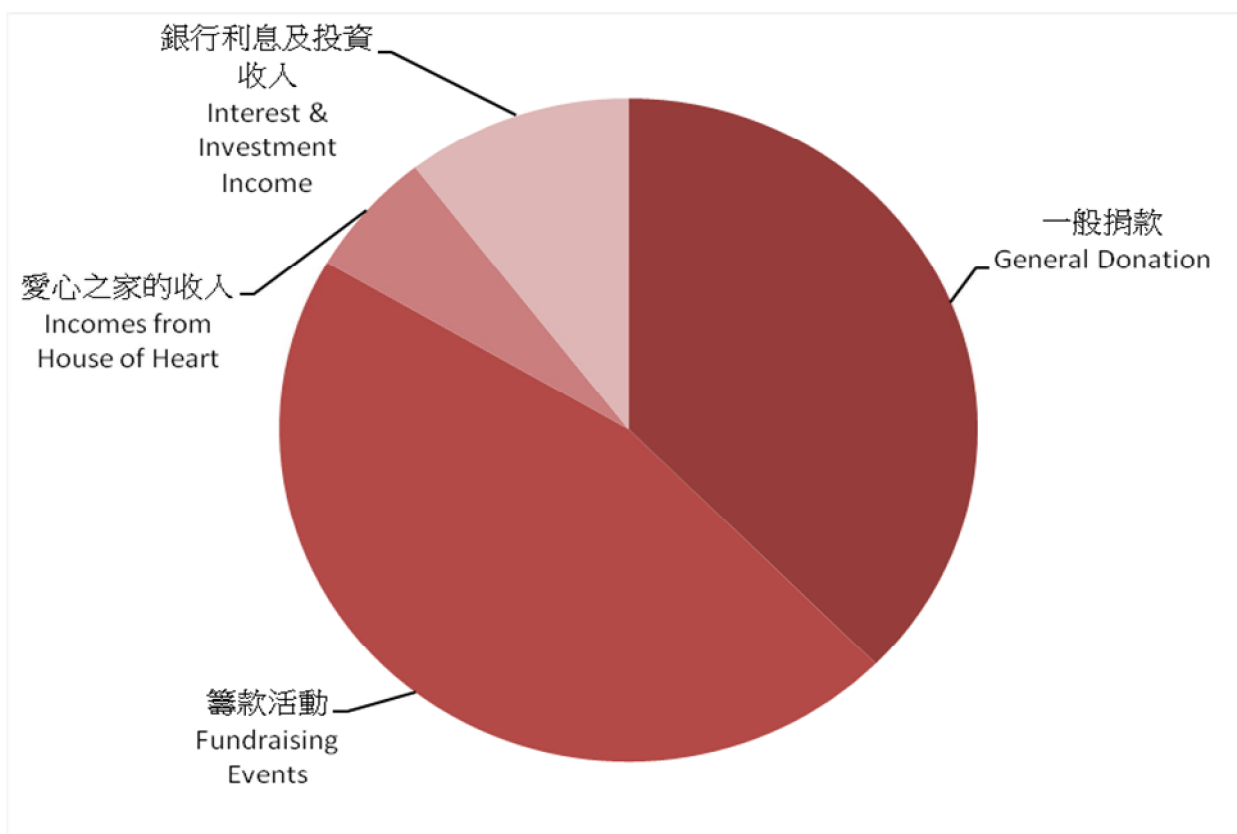
2012

Month	Project
Annual	Medical Financial Support Scheme (MFSS)
Annual	Heart Valve Programme
Annual	Sponsorship for China California Heart Watch

Children's Heart Foundation

Statistics Report – 1

Source of Overall Income of the CHF 2011-2012



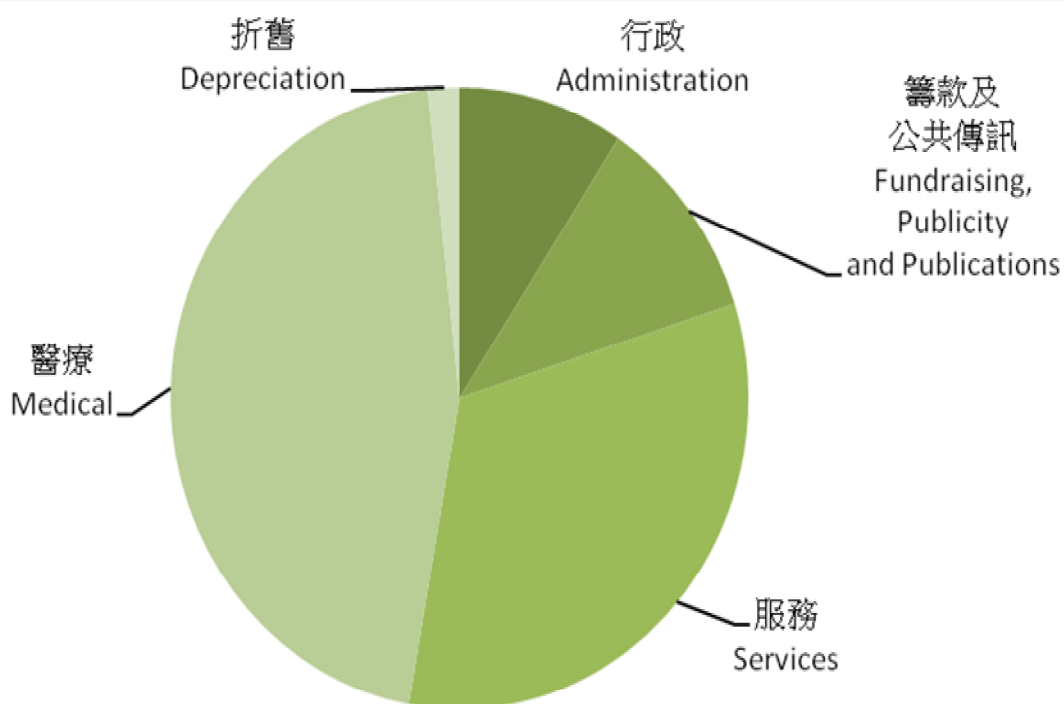
Fundraising Events	46%
General Donation	37%
Interest & Investment Income	11%
Incomes from House of Heart	6%
Total Income	HK\$2,974,000*

* Round to the nearest thousand

Children's Heart Foundation

Statistics Report – 2

Expenditure Distribution of the CHF 2011-2012



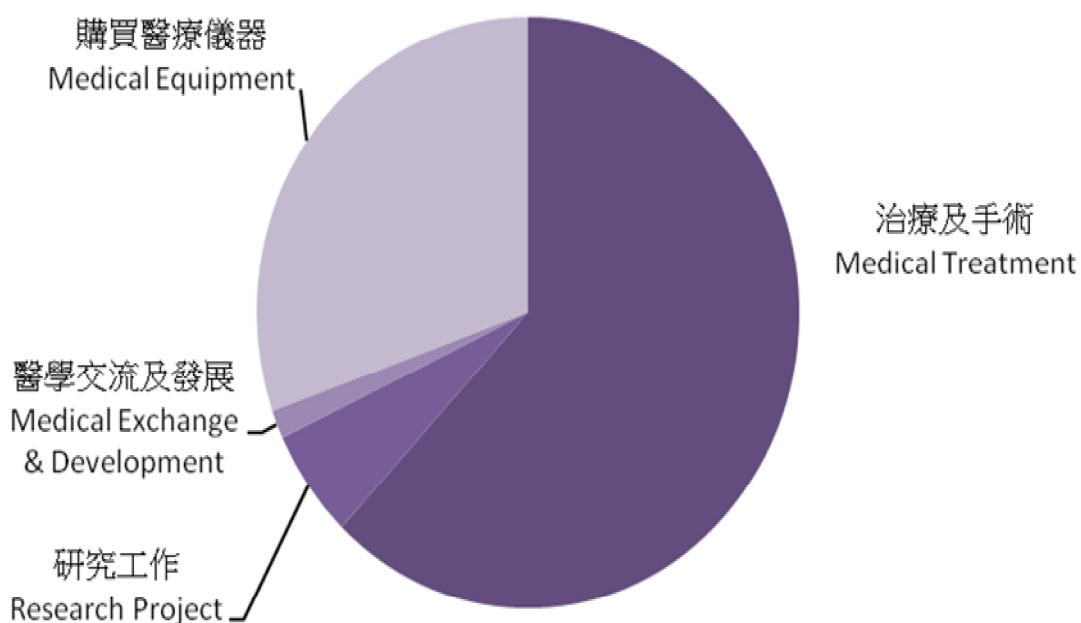
Medical (Please refer to Statistics Report – 3)	45%
Services (Please refer to Statistics Report – 43)	33%
Fundraising, Publicity and Publication	11%
Administration	9%
Depreciation	2%
Total	HK\$3,955,000*

* Round to the nearest thousand

Children's Heart Foundation

Statistics Report – 3

Expenditure of Medical Sponsorship 2011-2012

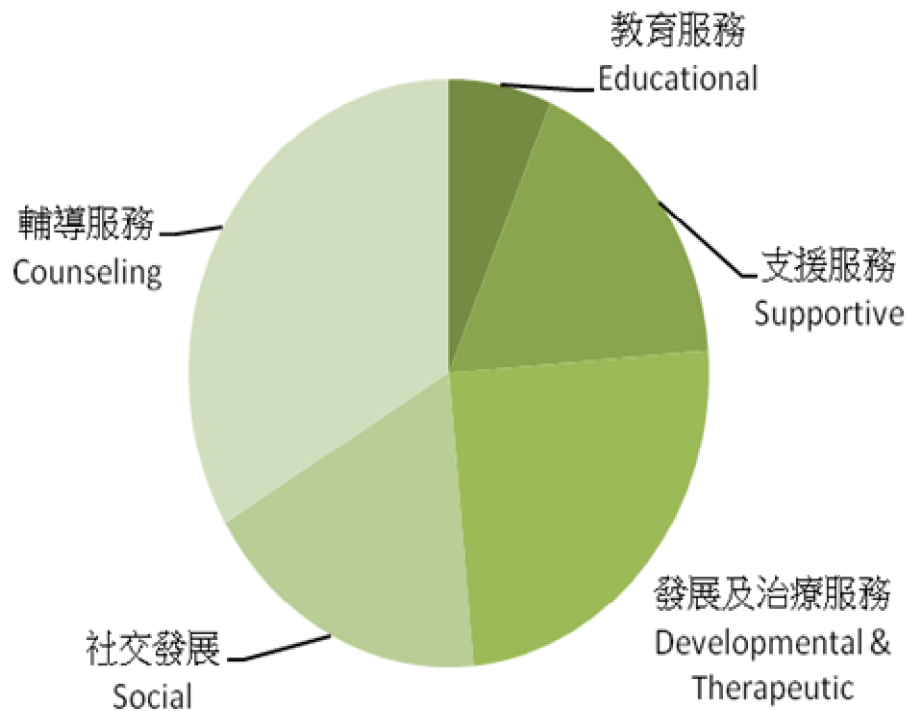


Medical Treatment	62%
Medical Equipment	30%
Medical Exchange & Development	6%
Research Project	2%
Total	HK\$1,779,750

Children's Heart Foundation

Statistics Report – 4

Expenditure on Members Services 2011-2012

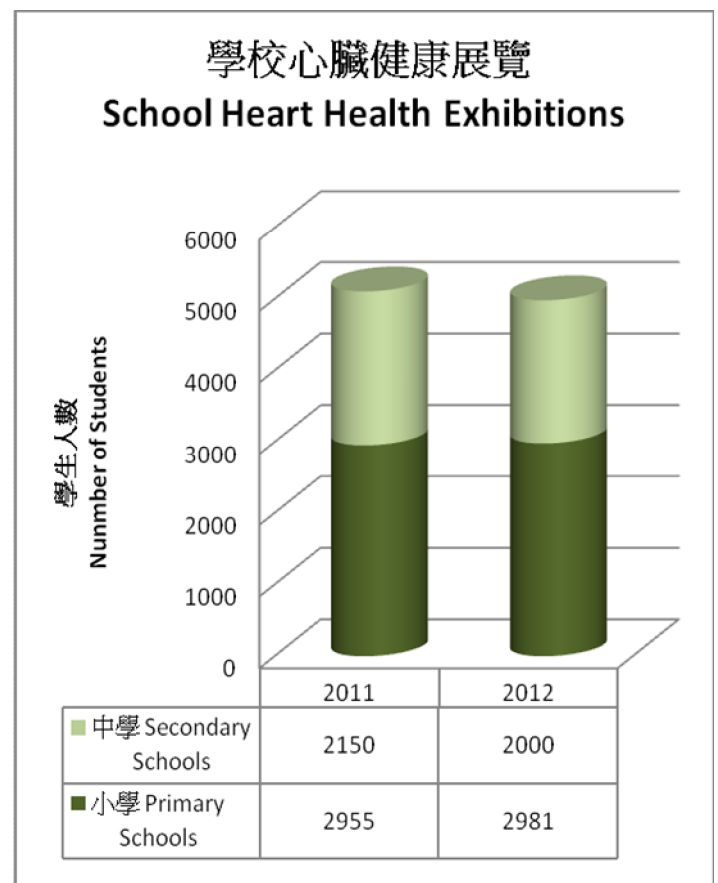
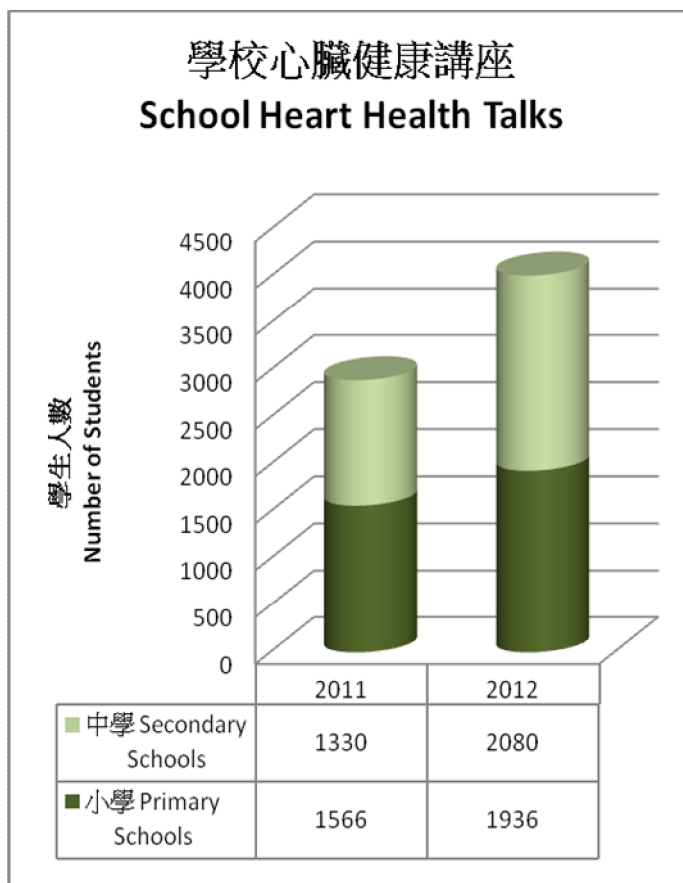


Counseling	34%
Developmental & Therapeutic	25%
Social	18%
Supportive	17%
Educational	6%
Total	HK\$1,305,150

Children's Heart Foundation

Statistics Report – 5

Heart Health Series: Care Our Heart 2011-2012 (School Exhibition and Talk)



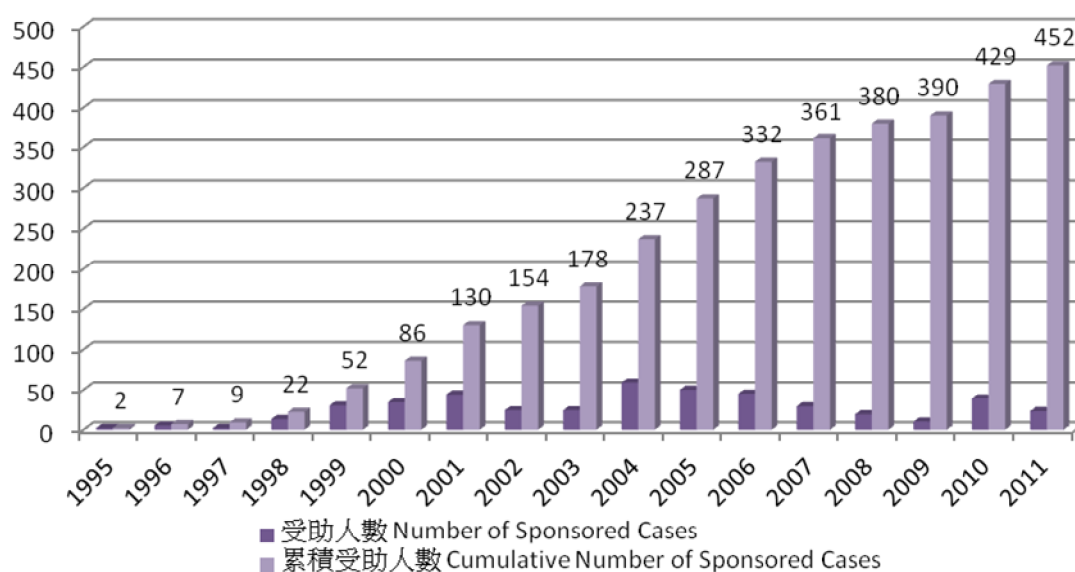
Remark: The campaign operated from May 2011 to June 2012

Children's Heart Foundation

Statistics Report – 6

Beneficiary in the Medical Treatment Sponsorship 1995-2011

Number of Beneficiary



	1995	1996	1997	1998	1999	2000	2001	2002	2003
Number of beneficiary	2	5	2	13	30	34	44	24	24
Cumulative Number of Sponsored	2	7	9	22	52	86	130	154	178
	2004	2005	2006	2007	2008	2009	2010	2011	/
Number of Sponsored Cases	59	50	45	29	19	10	39	23	/
Cumulative Number of Sponsored	237	287	332	361	380	390	429	452	/

Remarks:

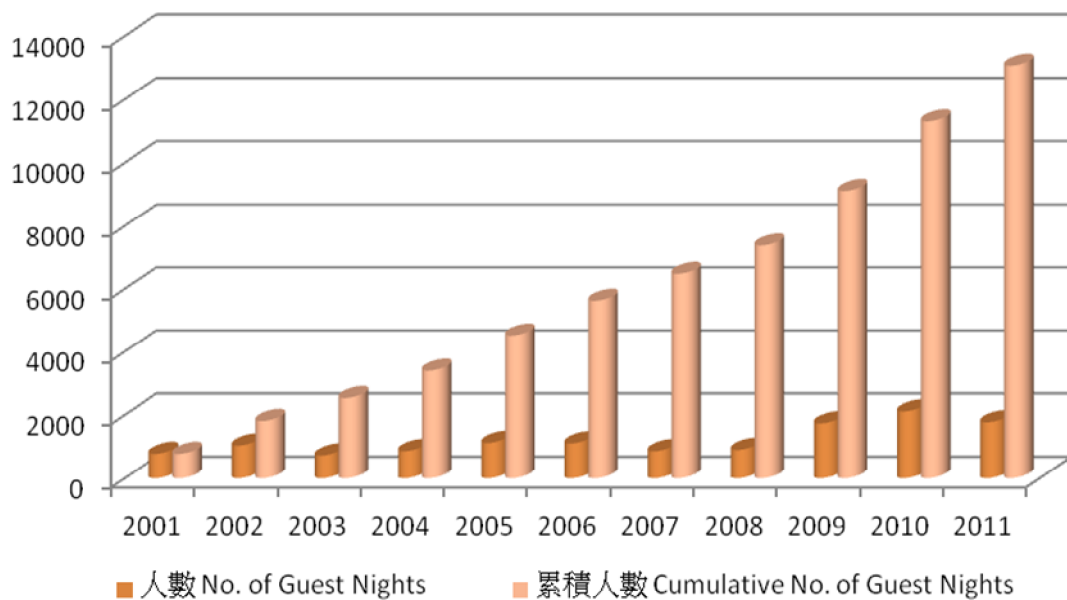
- 1) Medical Treatments mean Interventional Cardiac Catheterization, Pacemaker, Heart Valve (Homograft) and Nitric Oxide Treatments.
- 2) The Nitric Oxide Treatment was initiated by the CHF since 1999. The year of evidence proved the effectiveness of the treatment that the Government took up the responsibility from the CHF in 2007.
- 3) Heart Valve Project was initiated by CHF in 2000. The numbers of beneficiary depends the supplies of heart valve.

Children's Heart Foundation

Statistics Report – 7

Number of guest nights and cumulative guest nights at the House of the Heart 2011-2011

No. of Guest Night



	2001	2002	2003	2004	2005	2006	2007	2008	2009	2010	2011
使用人次	775	1,036	723	860	1,119	1,105	858	899	1,734	2,110	1768
累積使用人次	775	1,811	2,534	3,394	4,513	5,618	6,476	7,375	9,109	11,219	12,987

Remark: Relocation at 2007 and 2008 affected the usage of HOH.