

# Children's Heart Foundation



## Annual Report 2012-2013

---

Address : Rm 419-424, Wah Kwong House,  
Wah Fu Estate, Hong Kong  
Tel : 2553 0331  
Fax : 2553 4886  
E-mail : [chf@childheart.org.hk](mailto:chf@childheart.org.hk)  
Website : [www.childheart.org.hk](http://www.childheart.org.hk)



# Children's Heart Foundation

## Table of contents

<b>Contents</b>	<b>Pages</b>
Notice of Annual General Meeting	2
Rundown of Annual General Meeting 2012/2013	3
Regulation of Annual General Meeting 2012/2013	4
Introduction	5
Services	6 – 8
Organizational Structure	9 – 12
Message from the Chairlady	13 – 16
Key Members & Activities 2012-2013	16 – 20
Heart Health Series: 2012-2013 (School Exhibition and Talk)	20 – 23
Key Fundraising & In-kind Donation Events 2012-2013	22 – 27
Key Medical Training and Developmental Programmes 2012-2013	28
Statistics Report	26 – 35
CHF Relocation Notice	36



# Children's Heart Foundation

## CHILDREN'S HEART FOUNDATION

NOTICE is hereby given that an Annual General Meeting of the Foundation will be held at Happy Valley Suites, 1<sup>st</sup> Floor, Hong Kong Football Club, No.3 Sports Road, Happy Valley, Hong Kong at 2:30 p.m. on Saturday, the 24<sup>th</sup> day of August 2013 for the following purposes :

1. To consider and approve the Audited Accounts of the Foundation for the period from 1<sup>st</sup> January 2012 to 31<sup>st</sup> December 2012 together with the Executive Committee's and Auditor's Reports attached thereto;
2. To elect Executive Committee Members;
3. To appoint PricewaterhouseCoopers as Honorary Auditors; and
4. To transact any other competent business.

By Order of the Executive Committee

A handwritten signature in black ink, appearing to be 'J. H. H.', is written over a horizontal line.

Secretary

Date : 23 July 2013

A Member entitled to attend and vote at the Meeting is entitled to appoint a proxy to attend and vote on his behalf. A proxy need not be a Member.

# Children's Heart Foundation

## Rundown of Annual General Meeting

2012/2013

Time	Content
2:35 - 2:40pm	Confirm the agenda and rules of the meeting
2:40 - 2:55pm	Annual Report by Ms. Jenny Cheng
2:55 - 3:05pm	Financial Report by Miss Monica Woo
3:05 - 3:10pm	Question and Answer on the Annual Report and Financial Report
3:10 - 3:15pm	Approve the Annual Report & Financial Report
3:15 - 3:30pm	Election of Executive Committee Members for Year 2013/2014 a. Nomination of Candidates b. Polling for CHF EXCO 2013/2014
	Appointment of Honorary Auditor 2013/2014
3:30 - 3:35pm	EXCO Group Photo
3:35 - 3:40pm	Children Performance
3:40 - 3:50pm	Certificate Presentation
3:50 - 4:30pm	Reception Cocktail

# Children's Heart Foundation

## **Regulation of Annual General Meeting**

**2012/2013**

1. Run-down and regulation are listed on the Meeting documents.  
No amendment shall be made unless it is proposed.
2. The Executive Committee shall comprise not less than five and not more than eleven members.
3. Every member, who joined the CHF on or before 24 August 2013 and aged 18 or above, shall have one vote on each discussing issue.
4. Only those with valid voting card can vote.
5. Each agenda should be proposed and seconded before voting.
6. If being appointed, please vote with your own valid voting card and the valid voting card(s) of the proxy.
7. When voting, please vote according to the instruction of the Chair.  
Please do not put the voting card down until counting is finished.



# Children's Heart Foundation

## Introduction

The Children's Heart Foundation (CHF) was originally formed as a mutual support group for parents with children suffering from congenital heart disease. The parents realized that sharing experiences and information was a great benefit to all concerned. In 1994, with the support of doctors, nurses and medical social workers at the Cardiac Paediatric Unit of the Grantham Hospital, the CHF was founded as a registered charitable organization devoted to supporting children suffering from heart disease and their families.

Over the years, the Foundation has grown from a small group of volunteers into an organization which has a team of full-time staff and subcommittees specializing in different issues related to children with heart disease. As our organization depends entirely on public support and donations, the volunteers and supporters remain the backbone of the Foundation and the reason for its continuous success.

## Objectives

1. To provide financial and psychological support to families with children suffering from congenital heart disease.
2. To raise public awareness about congenital heart disease.
3. To support the development of technology and methods to detect and treat congenital heart disease.

## Services

### **1. Financial support for families**

Patients have to pay for treatments and equipment such as special catheters and pacemakers which are not covered by government. The CHF has helped hundreds of less well-off families through its Medical Financial Support Scheme to ensure children receive appropriate treatment.

### **2. Purchase of medical equipment**

New technology and medical breakthroughs are an essential part of improving treatment. The CHF helps upgrade existing facilities and services by purchasing the latest high-tech equipment, supplementing the services provided by the public hospitals.

### **3. Counseling services**

All parents expect their baby to be born healthy. When they are told their child has a heart problem, the first reaction is fear; fear of the unknown and fear about the future. Mum and dad are full of questions - What's wrong with my baby? What will happen next? Why did this happen? What treatment does the child need? The CHF provides counseling and support services for parents who need help.

### **4. House of the Heart**

When a child is admitted to hospital for heart surgery or treatment, parents face enormous difficulties and endure great stress. The House of the Heart (HOH) allows parents to get a good night sleep and spend more time with their children. They can freshen up during the day or just take time out to relax. It also reduces the amount of time parents spend travelling to and from the hospital.

For the development of Queen Mary Hospital, the current HOH at Pokfulam Road was closed and to be relocated to Wah Kwong House Wah Fu Estate. It will be ready by the end of 2013.



## Services

### **5. Educational programmes**

Most people have never heard of congenital heart disease, despite it being one of the most common congenital problems among children. Through various educational programmes and exhibitions, the CHF promotes public awareness about heart health and raises support in the community for these special children. The CHF also organises talks so parents can learn more about caring for children with heart disease, nutritional issues and child development.

### **6. Parents support group**

There are many different types of problems associated with congenital heart disease and the CHF's parents support group meets regularly to provide a channel to discuss issues of concern. Caring for these special children can be difficult and stressful, so talking to people who have the relevant experience, knowledge and understanding can give parents a sense of belonging. Parents can often feel helpless, so it is a real comfort to be able to share their anxiety with others who have been through a similar experience. The CHF works to promote self help and mutual support between these families. Parents can share their experiences at the wards, in the support group meetings and during other activities. This is an effective way of enhancing communications between parents at a very difficult time.

### **7. Ward visits**

Hospitalisation is always stressful and painful for both the children and their families. Unfortunately, spending time in hospital is a common occurrence for children with heart disease. Ward visits by professional teams and trained volunteers are essential as they stimulate the children's development and facilitate positive thinking among parents. Volunteers help with artwork, reading and storytelling, while parent volunteers share their personal experiences, giving other parents the confidence to face the challenges ahead.

## Services

### **8. Developmental programmes**

Because of their physical limitations, some children with heart disease encounter learning problems which affect their education, social lives and psychological development. The CHF organises a variety of programmes like the children's choir, art workshops and leadership training programmes. As they have a lot in common, the children feel comfortable taking part in these activities together. The CHF also organises outdoor and indoor activities such as camping to strengthen the parent-child relationship and boost self confidence.

### **9. Medical development and exchange**

The CHF brings overseas surgeons and cardiologists to Hong Kong to share their experience with local medical staff. This is of vital importance as it helps staff keep up with all the latest advances in treatment and medical technology.

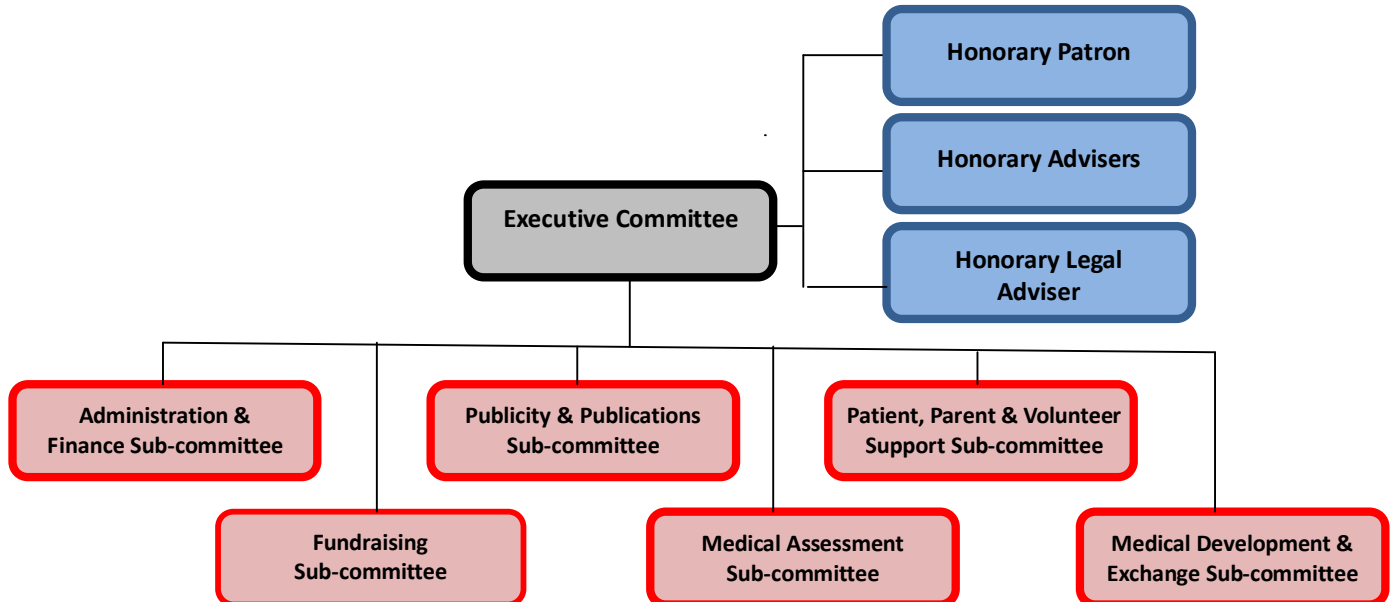
The CHF also sponsors medical staff to receive further training and attend local and overseas seminars and conferences. Through Queen Mary Hospital, the CHF now provides funding so medical staff from Mainland China can receive training in Hong Kong.

### **10. Research**

The CHF provides funding for research into congenital heart disease with an aim to promote medical advancement.

# Children's Heart Foundation

## Organizational Structure



Hon. Patron : The Hon. Selina CHOW, JP  
 Hon. Advisers : Ms. Vivien V.M. CHONG  
                   : Dr. York Y. N. CHOW (resigned on March 2013)  
                   : Dr. Angela M.Y. LAU  
                   : Dr. C.C.LUK  
                   : Mr. Duncan W. PESCOD, JP  
 Hon. Legal Adviser : Mr. Andy KUNG

### Executive committee members 2012/2013

Chairlady : Ms. Jenny Y.F. CHENG  
 Vice Chairman : Dr. Adolphus K.T. CHAU  
                   : Ms. Christine W.C. HO  
 Secretary : Ms. Connie Y.L. LAU  
 Treasurer : Miss Monica K.T. WOO  
 Members : Ms. W.K. AU  
               : Ms. Rachel S.P. CHEUNG  
               : Mrs. Yasmin MAHBOOBANI  
               : Dr. K.T. WONG  
               : Mr. Patrick T.F. YEUNG  
               : Dr. T.C. YUNG  
 Hon. Auditor : PricewaterhouseCoopers

(Listed in alphabetical order)

# Children's Heart Foundation

## Organizational Structure

### Administration and finance sub-committee 2012/2013

Chairperson	:	Ms. Connie Y.L. LAU
Members	:	Mr. Kinze K.S. LEUNG
	:	Mr. Jack Y.H. LO
	:	Miss Monica K.T. WOO

### Fundraising sub-committee 2012/2013

Co- Chairperson	:	Mrs. Yasmin MAHBOOBANI
	:	Prof. David ZWEIG
Members	:	Ms. Sophia Y. F. SO
	:	Ms. Christie M.S. WO
	:	Ms. Anna H.M. YAU

### Publicity and publications sub-committee 2012/2013

Chairperson	:	Dr. K.T. WONG
Members	:	Mr. Charles Y. K. LEE
	:	Mr. Kinze K.S. LEUNG
	:	Mr. Jack Y.H. LO
	:	Mr. Jonathan MARSH
	:	Ms. Christine M.W. YIP

### Medical assessment sub-committee 2012/2013

Consultant	:	Dr. Adolphus K.T. CHAU
	:	Dr. T.C. YUNG
Chairperson	:	Ms. Christine W.C. HO
Member	:	Mr. Patrick T.F. YEUNG

(Listed in alphabetical order)

# Children's Heart Foundation

## Organizational Structure

### Patient, parent and volunteer support sub-committee 2012/2013

Chairperson	:	Ms. Christine W.C. HO
Members	:	Ms. Rachel S.P. CHEUNG
	:	Ms. Helen L.S. HO
	:	Mr. Nelson C.C. HO
	:	Ms. Connie Y.L. LAU
	:	Mr. Kinze K.S. LEUNG
	:	Mr. Jack Y.H. LO
	:	Ms. Lolitter S.K. NG
	:	Miss Suyi F.Y. SO
	:	Miss Sony H.N. SO
	:	Mr. Ken M.K. WONG
	:	Miss Monica K.T. WOO
	:	Mr. Charles K.B. YEE

### Medical development and exchange sub-committee 2012/2013

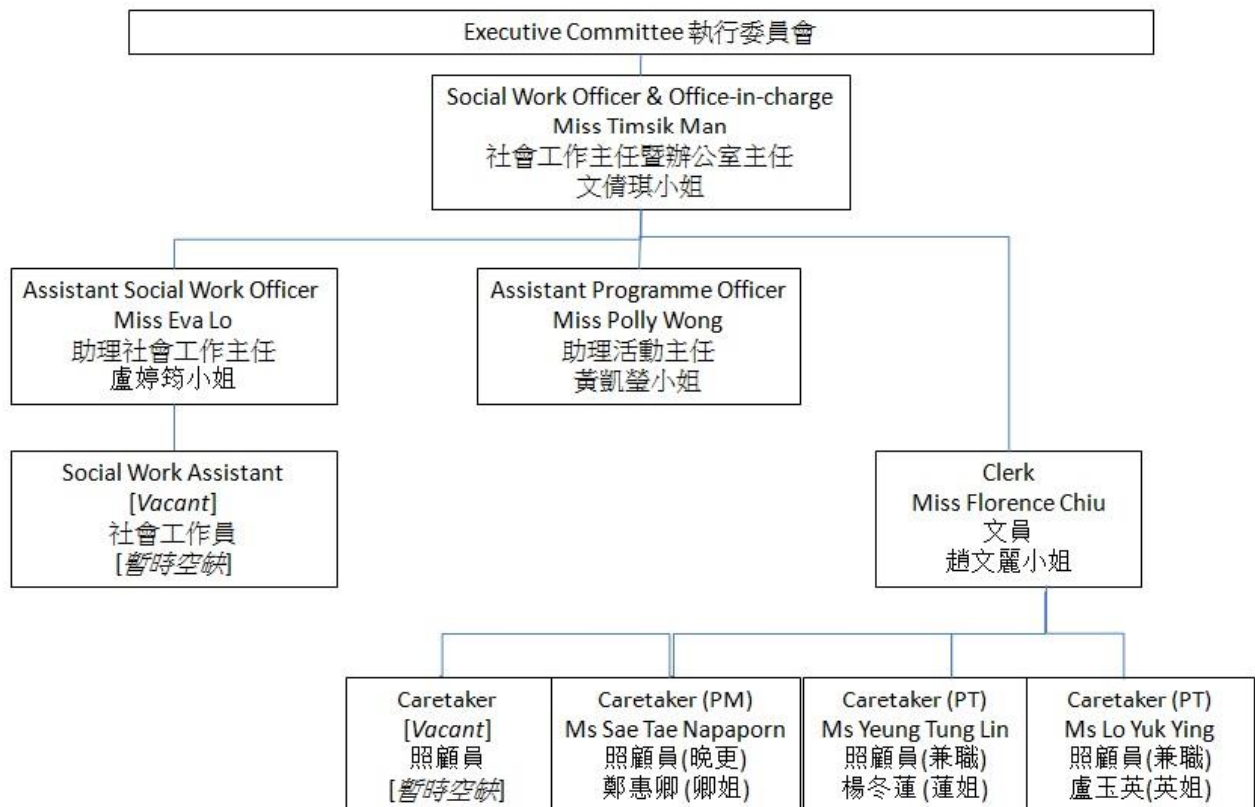
Chairperson	:	Dr. Adolphus K.T. CHAU
Members	:	Ms. W. K. AU
	:	Ms. Christine W.C. HO
	:	Dr. T.C. YUNG

(Listed in alphabetical order)

# Children's Heart Foundation

## Organizational Structure

### CHF Staff Chart





# Children's Heart Foundation

## Message from the Chairlady

### Embracing Change

---

First of all, I am sincerely grateful that you can be present at the Children's Heart Foundation Annual General Meeting. I would like to take this opportunity to share with you the foundation's work over the year and take suggestions to improve our services in the coming year. Last year, the Foundation faced different challenges. Besides solving the problems we encountered, we are striving to improve our existing services to serve and benefit children with congenital heart disease and their families.

With the upcoming redevelopment project of Queen Mary Hospital, the House of the Heart (HOH), situated in Pokfulam, moved out in early August. With the support from the Government and Operation Santa Claus 2012, the new HOH will be located in Wah Fu Estate Wah Kwong House. We look forward to be able to re-open this service before the end of this year and provide a home-like environment for parents to rest after taking care of their hospitalized children. Although it takes about 10 minutes to reach the hospital from the new location, the 3,000 sq ft of space enables us to better expand our existing services. In addition to self-catering, free Wifi and an Information Corner, there is a new function room that can be used for play therapy. Our social workers will develop play therapy which suits the needs of children with congenital heart disease. We expect that, in conjunction with the hardware and software support, we can lay a good foundation for our Parents Resource Centre (CHF PPRC) in the future.



# Children's Heart Foundation

## Message from the Chairlady

### Embracing Change

---

In response to today's trends, the Foundation has made better use of the social networking platforms to strengthen communication with the members. Besides regular updates on our Facebook page by CHF volunteers, we have set up a group specifically for our parents to share their experiences and support each other. For our younger members, YP Training Scheme 2013 was set up in trial nature to let them earn some solid office-working experience to empower their ability so as to face the challenges. We have also founded the Teens Club Through different programmes like learning to cook, acting and participating in Experience in the Dark we hope they were inspired by these activities and develop lifelong friendships.

At the same time, we continue to strengthen the content of the Foundation's newsletter. From its previous focus on reviewing our activities, we have added additional articles about medical knowledge and parent-child relationships. We want the newsletter to provide useful information and welcome any suggestions to improve the content.

As a result of a new British Government policy, there is no longer any supplies for homograft treatment available for children with complex congenital heart disease. The Foundation has extended sponsorships to other types of heart valves and related blood vessels treatments, so more sick children can benefit.

Internationally, we have worked with the China California Heart Watch. Last year, we helped arrange heart surgery for eight poor children in Yunnan province.



# Children's Heart Foundation

## Message from the Chairlady

### Embracing Change

---

As a mother, especially a mother of a child who suffers from heart disease, I understand the stress created by any misunderstanding among the general public about congenital heart disease. Since it is not cost effective to hold large exhibitions in shopping malls, the foundation decided to strengthen school education by sending doctors and colleagues to talk about heart health with the help of display panels. The foundation has visited nearly 80 schools, reaching out to over 20,000 students. I would like to thank Dr. KT Chau, Dr. TC Yung, Dr. KT Wong and Dr. Alex Kong for taking the time to speak at so many secondary schools.

Besides expanding our services and improving support for sick children and their families, I am pleased to see more people, companies and organisations have recognized our work. The results are very encouraging and the fundraising figures have helped to reverse 2011's deficit. I am also happy to report that more than 5,000 people participated in the Charity Walk and we raised more than HK\$1.7 million. The number of participants and donations broke our previous records. This year the Charity Walk is scheduled to be held on the Peak on 27<sup>th</sup> October. I hope even more people will take part this year.

Besides our own fundraising activities, corporate sponsorship is an important source of revenue for the foundation. We are honoured to work with Professor Aaron Zweig & his family, Fuji Xerox (Hong Kong) Limited, Hasbro Far East Limited, Nu Skin Enterprise HK Inc, Standard Chartered Bank (Hong Kong) Limited and The Ohel Leah Synagogue Charity. We also cooperate with a number of new companies, including FWD, Heng Wah (HK) Decoration Co., Ng Teng Fong Charitable Foundation Limited and Wellcome. Their sponsorship supports our steady expansion.

# Children's Heart Foundation

## Message from the Chairlady

### Embracing Change

---

It is the generous support of the community that helped the Children's Heart Foundation grow from a small self-help group into what it is today, providing diversified services to the needy. I would like to thank our Honorary Patron Mrs. Selina Chow, Honorary Legal Advisor Mr. Andy Kung, Honorary Advisors Ms. Vivien Chong, Dr York Chow, Dr. Angela Lau, Dr. CC Luk and Mr. Duncan Pescod, Honorary Auditor, PricewaterhouseCoopers, and our Executive Committee and the Subcommittee. Without their support and dedication, it would be difficult for us to have achieved all we have done.

Last but not least, I wish to thank the staff who work in our foundation. I am sorry that with limited resources they often need to work in multiple areas. Without them, we could never run our events or services smoothly. I would also like to thank all those volunteers who spend their time helping our foundation.

Next year is our foundation's 20<sup>th</sup> Anniversary. We hope to continue to provide quality care to children with congenital heart disease and their families with empathy, expertise and excellence!

Thank you very much!

Jenny Cheng

# Children's Heart Foundation

## Key Members' Activities 2012-2013

### 2012

	Month	Event
1	Jan	Planting in the South
2	Feb	%Write Your Heart+Design Competition
3	Feb	Chinese New Year Ward Visit 2012
4	Feb	New Year Gathering 2012
5	Feb	Credit Suisse Ward Visit
6	March	Friends of CHF: 2011Presentation Ceremony and Gathering
7	March	%Learn through Play+Parent-Child Workshop
8	April	Teens Club: Youth Cooking and Gathering
9	April	DIY the Easter Egg
10	April	Talk on Chinese Medicine-Caretakers Stay Healthy
11	April	Make the Cupcake Together
12	April . June	Home Tutorial Scheme
13	April . June	CHF Children Choir . Phase 1
14	May	Handmade Leather Workshop
15	May	CHF Newsletter (Spring 2012)
16	May	Caring Company NGO Partnership Day 2011/2012
17	June	MS Services Day 2012
18	July	Summer Camp 2012
19	July	%Saltimbanco - Cirque Du Soleil+

# Children's Heart Foundation

## Key Members' Activities 2012-2013

### 2012

	Month	Event
20	July	Children Overnight Adventure Camp
21	July	Set the guideline for your child+ParentsqTalk
22	July . Aug	Master Talk+Workshop
23	July . Aug	CHF Workshop: Road of Rehabilitation
24	July - Dec	CHF Children Choir . Phase 2
25	Aug	Youth Overnight Adventure Camp
26	Aug	Annual General Meeting 2011/2012
27	Aug	Academic Award Scheme 2012
28	Aug . Oct	Rainbow Dance Ranger
29	Aug . Oct	Children Ambassador 2012
30	Nov	CHF invites you to the Disneyland
31	Nov	Teens Club: Teens Can Cook
32	Dec	Get %The Roch Calendar 2013+
33	Dec	Teens Club: Bakery Fun
34	Dec	CAKE Shop
35	Dec	Christmas Party 2012
36	Dec	CHF Newsletter (Winter 2012)
37	Annual	Ward Visits

# Children's Heart Foundation

## Key Members' Activities 2012-2013

### 2013

	Month	Event
1	Jan	Friends of CHF: Presentation Ceremony 2012
2	Jan	The Caring Company Partnership expo 2013
3	Jan	Chinese New Year Ward Visit 2013
4	Jan	New Year Gathering 2013
5	Feb	Teens Club: Shall We Talk
6	March	Children GO! GO! GO! . Easter Cupcake Making Class
7	March	Teens Club: The Acting Battle
8	March	Write my Thank You Card
9	April	Cooking Master . Parent-child Rice Dumpling Making Class
10	May	Talk on Chinese Medicine . Acupuncture Points Massage
11	May	Little Designer . Recycle Bag Making Class
12	May	Experience in the Dark
13	May	Design Notice Board at the Ward
14	June	Sweet Tour at Disneyland
15	June	MS Services Day 2013
16	June	CHF Newsletter (Summer 2013)
17	July	Summer Camp 2013
18	July . Aug	Summer Incredibles
19	Aug	Singing Angels Performing Team

# Children's Heart Foundation

## Key Members' Activities 2012-2013

**2013**

	Month	Event
20	Aug	Annual General Meeting 2012/2013
21	Sept . Oct	HAL Dancing Team
22	Sept . Oct	Academic Award Scheme 2013
23	Annual	YP Training Scheme 2013
24	Annual	Ward Visits

## Sponsors of Key Members' Activities 2012

			
			
			Morgan Stanley
mothercare			智樂 playright
	Standard Chartered 渣打銀行 		

Listed in alphabetical order

# Children's Heart Foundation

## Heart Health Series 2012-2013 (School Exhibition and Talk)

**2012**

	<b>Participating School</b>	<b>Exhibition</b>	<b>Talk</b>
1	Aplichau KaiFong Primary School	★	★
2	Christian Alliance Toi Shan H.C. Chan Primary	★	★
3	Concordia Lutheran School	★	★
4	Diocesan Girls' School		★
5	Hennessy Road Government Primary School	★	★
6	Kwun Tong Government Secondary School		★
7	Ning Po College		★
8	Pak Tin Catholic Primary School	★	★
9	Raimondi College	★	★
10	United Christian College (Kowloon East)	★	
11	S.K.H. Fung Kai Millennium Primary School	★	
12	S.T.F.A Seaward Woo College	★	★
13	St. Catherine's School for Girls. K.T.		★
14	St. Stephen's College Preparatory School		★
15	Stewards Pooi Kei Primary School		★
16	Tsung Tsin Primary School and Kindergarten		★
17	W.K.T.A. The Yuen Yuen Institute Chan Lui Chung Tak Memorial School		★

Listed in alphabetical order

# Children's Heart Foundation

## Heart Health Series 2012-2013 (School Exhibition and Talk)

### 2012

	Participating School	Exhibition	Talk
18	Ying Wa Girls School	★	★
19	Ying Wa Primary School	★	
	<b>Total</b>	<b>11</b>	<b>16</b>

Listed in alphabetical order

### 2013

	Participating School	Exhibition	Talk
1	Alliance Primary School, Whampoa	★	★
2	Cartias Chong Yuet Ming Secodary School		★
3	Chan Shu Kui Memorial School	★	
4	Fanling Government Primary School		★
5	CMA Secondary School	★	★
6	GCC&ITKD Lau Pak Lok Secondary School		★
7	Heung To Secondary School (Tseung Kwan O)	★	★
8	HHCKLA Buddhist Chan Shi Wan Primary School	★	★
9	Jordan Road Government Primary School		★
10	Leung Kui Kau Lutheran Primary School	★	
11	Lingnan Primary School	★	★

Listed in alphabetical order



# Children's Heart Foundation

## Heart Health Series 2012-2013 (School Exhibition and Talk)

**2013**

	<b>Participating School</b>	<b>Exhibition</b>	<b>Talks</b>
12	Lingnan University Hong Kong Alumni D.S.S.		★
13	Ma On Shan Ling Liang Primary School	★	
14	Ning Po No.2 College	★	
15	North Point Government Primary School	★	
16	S.K.H. Ching Shan Primary School	★	★
17	S.K.H Fung Kei Millennium Primary School		★
18	S.K.H Kei Hin Primary School		★
19	S.K.H St. Clement's Primary School		★
20	Sham Shui Po Govt. Primary School	★	★
21	Tack Ching Girls' Secondary School	★	
22	Wai Kiu College	★	★
23	Yew Chung International School - Secondary	★	
	<b>Total</b>	<b>15</b>	<b>16</b>

Listed in alphabetical order

# Children's Heart Foundation

## Key Fundraising Events & In-kind Donation 2012-2013

### 2012

	Month	Event
1	Feb	Lucky Money Wishes Campaign 2012
2	Feb	HKYMCA Charity Campaign
3	March	"Share My Song+of CRHK, nominated by Mr. Roger Lee Yan Lam
4	March	Colour My World Charity Show
5	Mar . Jul	DVD Charity Sales of the Luxe Manor
6	April	"Share My Song+of CRHK, nominated by Ms. Vangie Tang
7	May	OOCL Charity Campaign 2012
8	June	The Roche Children Walk 2012
9	Jun 2012 . Mar 2013	50 <sup>th</sup> Anniversary of Old Master Q Charity Campaign
10	Oct	Heart-to-Heart Charity Walk 2012 %Support the Rainbow+
11	Oct	%Offer Sweets Offer Love+Charity Sales by HKUST
12	Nov	Charity Event from Emirates (HKOC 2012)
13	Nov	Charity Campaign of SPA PH+ and MEDIC I-LASER
14	Nov	%Nightfest+Charity Event by South Island School
15	June 2012 . March 2013	Charity Sales of Dwatch
16	Dec	Alfestco Little Christmas Hat Campaign 2012
17	Dec	Standard Chartered (HK) Bank . Fundraising Flea Market

# Children's Heart Foundation

## Key Fundraising Events & In-kind Donation 2012-2013

### 2012

	Month	Event
18	Annual	RBS Giving Program
19	Annual	Corporate Donation Project 2012 ❖ Hasbro Far East Charitable Programme 2012 ❖ Operation Santa Claus 2012 ❖ The Ohel Leah Synagogue Charity 2012
20	Annual	Placing CHF Donation Box
21	Annual	Donation for a RED Gift Set Campaign
22	Annual	CHF T-shirt Charity Sales
23	Annual	Greeting Card Charity Sale
24	Annual	In-kind Donation ❖ Fuji Xerox (Hong Kong) Limited ❖ Hasbro Far East Limited ❖ Pentland Asia

# Children's Heart Foundation

## Key Fundraising Events & In-kind Donation 2012-2013

### 2013

	Month	Event
1	Jan	Charity Campaign of Nu Skin Enterprises Hong Kong Inc.
2	Feb	Charity Sales of Man Hing Hong
3	Feb	Champion Sports and Arts Association
4	Feb	RED Gift from SANOFI
5	Feb - March	Lucky Money Wishes Campaign 2013
6	March	Charity Event at Heng Wah (HK) Decoration Co., Ltd
7	March	DP World Charity Event
8	April	Colour My World Charity Show
9	May	OOCL Charity Campaign 2013
10	May	"Share My Song+of CRHK, nominated by Mr. Patrick Yeung
11	June	The Roche Children Walk 2013
12	July	Charity Campaign of Nu Skin Enterprises Hong Kong Inc.
13	Aug	Infinity Workshop Charity Music Show 2013
14	Aug . Sept	Charity Sales of Jason Food & Living
15	Aug - Nov	FWD Virtual Walk
16	Sept	Jamieson Peak Challenge 2013
17	Oct	Heart-to-Heart Charity Walk 2013 % Hug And Love+
18	Dec	Alfestco Little Christmas Hat Campaign 2013

# Children's Heart Foundation

## Key Fundraising Events & In-kind Donation 2012-2013

### 2013

	Month	Event
19	Annual	RBS Giving Program
20	Annual	Corporate Donation Project 2013 ❖ Hasbro Far East Charitable Programme 2013 ❖ Ng Teng Fong Charitable Foundation ❖ The Ohel Leah Synagogue Charity 2013
21	Annual	Bulk Mailing Campaign ❖ Hong Kong Electric Company ❖ Nanyang Comercial Bank, Ltd
22	Annual	Placing CHF Donation Box
23	Annual	Donation for a RED gift set campaign
24	Annual	CHF T-shirt Charity Sales
25	Annual	Greeting Card Charity Sale
26	Annual	In-kind Donation ❖ Fuji Xerox (Hong Kong) Limited ❖ Hasbro Far East Limited ❖ Pentland Asia



# Children's Heart Foundation

## Key Medical Programme 2012-2013

### 2012

	Month	Project
1	Annual	Sponsorship for China California Heart Watch 2012
2	Annual	Medical Financial Support Scheme (MFSS) 2012
3	Annual	Heart Valve Programme 2012

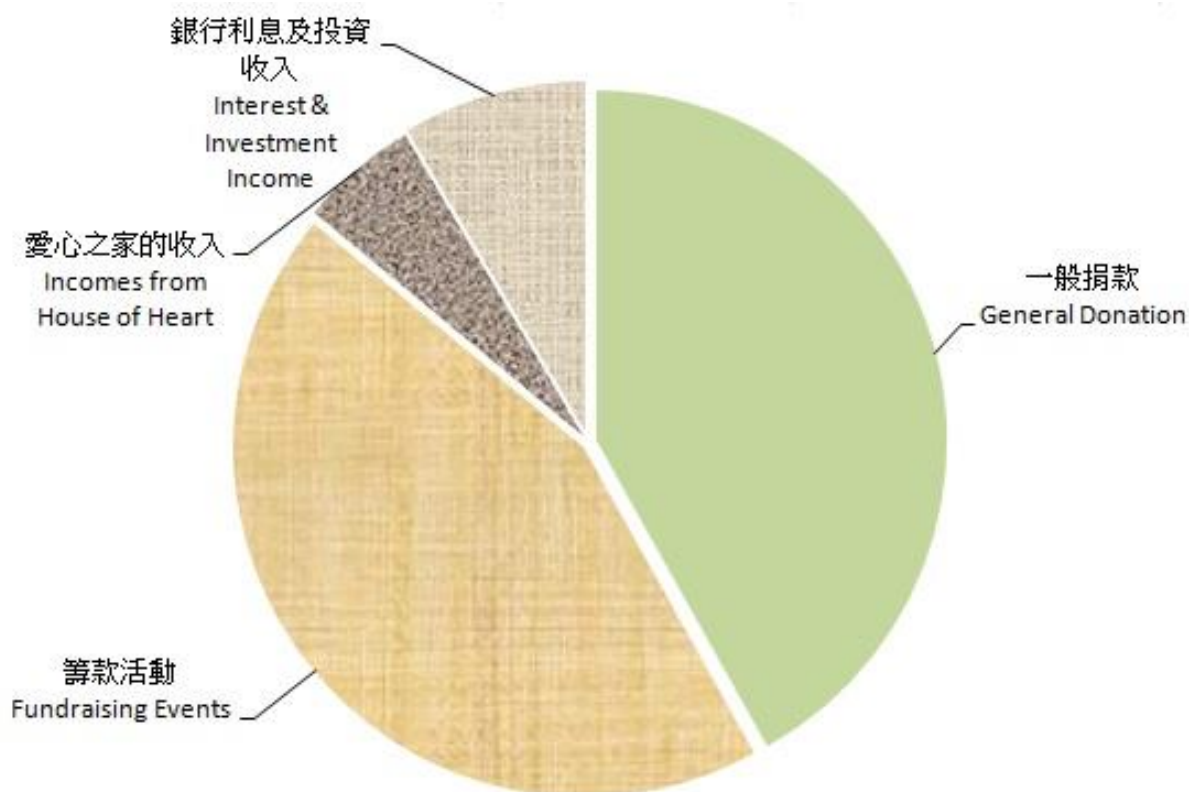
### 2013

	Month	Project
	Annual	Research Sponsorship: Copy-number Variation in Chinese patient with conotruncal defects . a pilot study of 100 patient
1	Annual	Sponsorship for China California Heart Watch 2013
2	Annual	Medical Financial Support Scheme (MFSS) 2013
3	Annual	Heart Valve Programme 2013

# Children's Heart Foundation

## Statistics Report – 1

### Source of Overall Income of the CHF 2012/2013



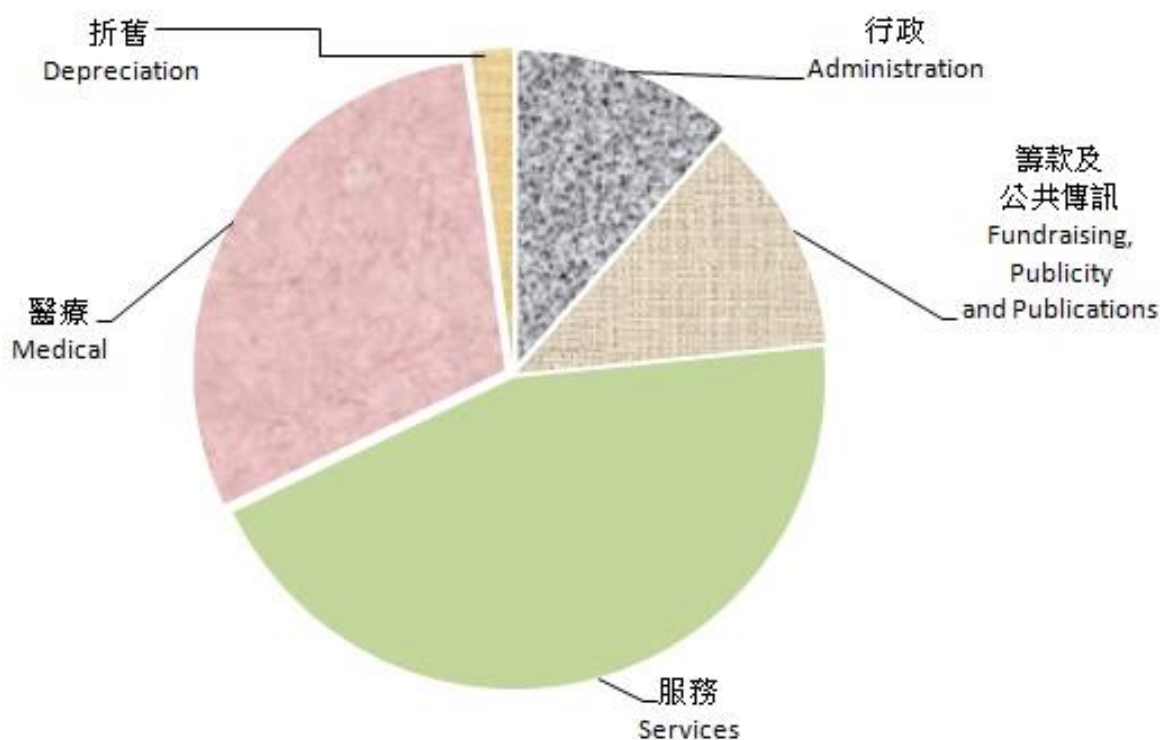
Fundraising Events	HK\$ 1,863,000 (44%)
General Donation	HK\$ 1,778,000 (42%)
Interest & Investment Income	HK\$ 381,000 (9%)
Incomes from House of Heart	HK\$ 212,000 (5%)
<b>Total Income</b>	<b>HK\$ 4,234,000*</b>

\* Round to the nearest thousand

# Children's Heart Foundation

## Statistics Report – 2

### Expenditure Distribution of the CHF 2012/2013



Services (Please refer to Statistics Report – 3)	HK\$ 1,452,000 (45%)
Medical (Please refer to Statistics Report – 4)	HK\$ 968,000 (30%)
Fundraising, Publicity and Publication	HK\$ 387,000 (12%)
Administration	HK\$ 355,000 (11%)
Depreciation	HK\$ 65,000 (2%)
<b>Total</b>	<b>HK\$ 3,227,000*</b>

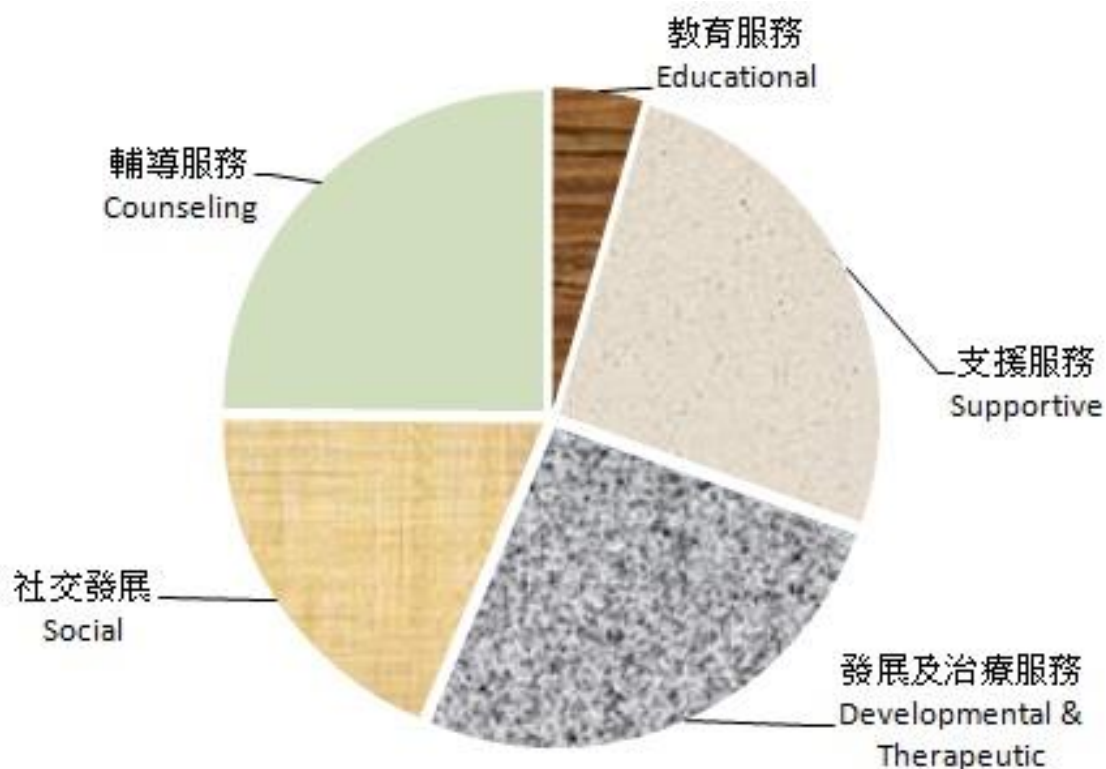
\* Round to the nearest thousand



# Children's Heart Foundation

## Statistics Report – 3

### Expenditure on Members Services 2012/2013

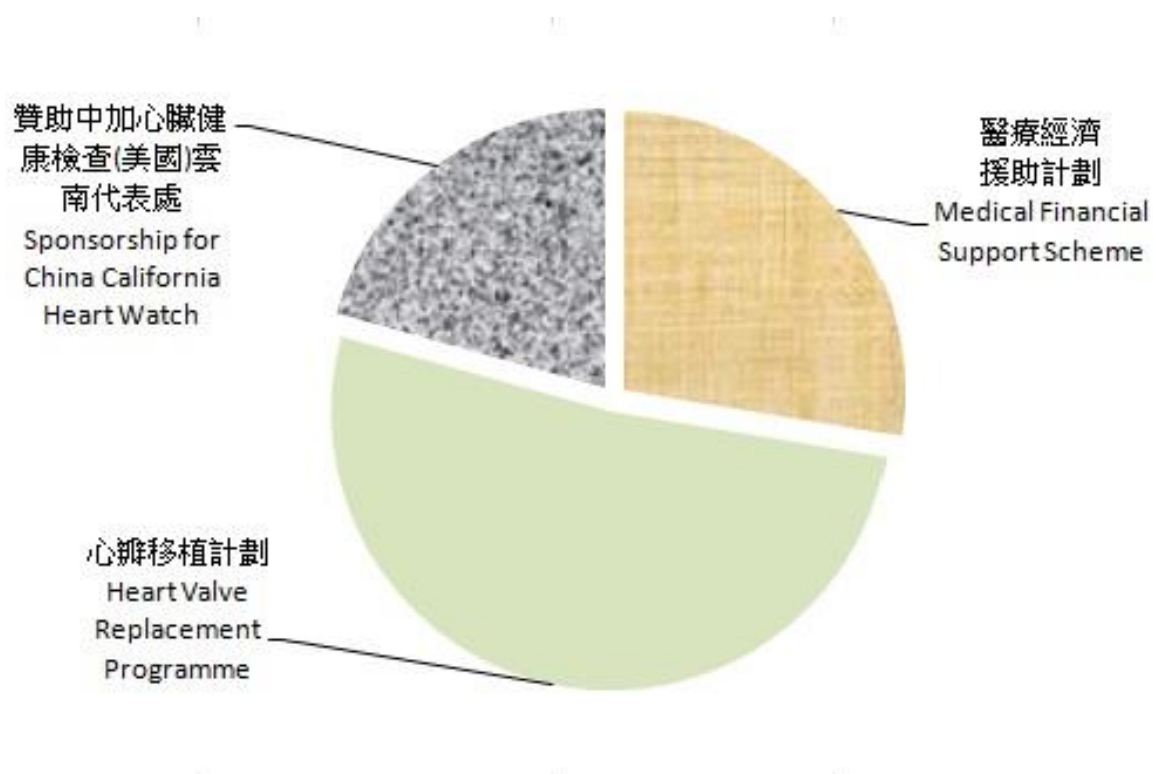


Supportive	HK\$ 373,000 (26%)
Developmental & Therapeutic	HK\$ 366,000 (25.5%)
Counseling	HK\$ 359,000 (25%)
Social	HK\$ 273,000 (19%)
Educational	HK\$ 65,000 (4.5%)
<b>Total</b>	<b>HK\$ 1,436,000</b>

# Children's Heart Foundation

## Statistics Report – 4

### Expenditure of Medical Sponsorship 2012/2013



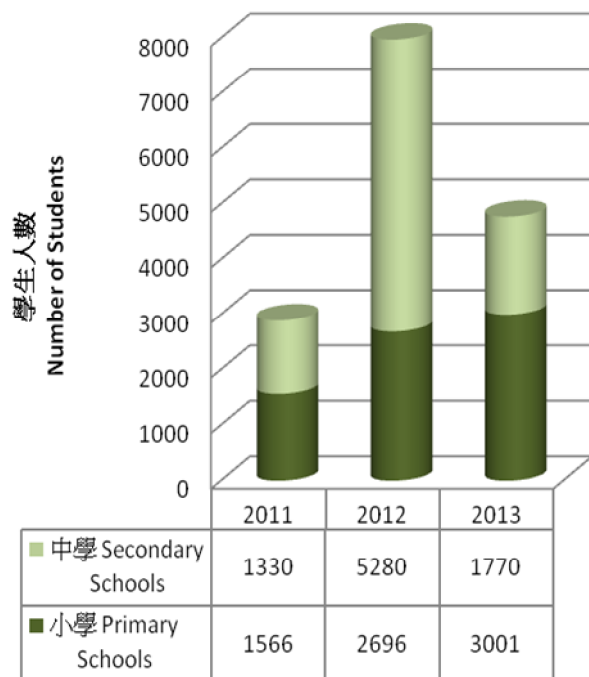
Medical Financial Support Scheme	HK\$ 271,000 (28%)
Heart Valve Replacement Programme	HK\$ 493,000 (51%)
Sponsorship for China California Heart Watch	HK\$ 203,000 (21%)
<b>Total</b>	<b>HK\$ 967,000</b>

# Children's Heart Foundation

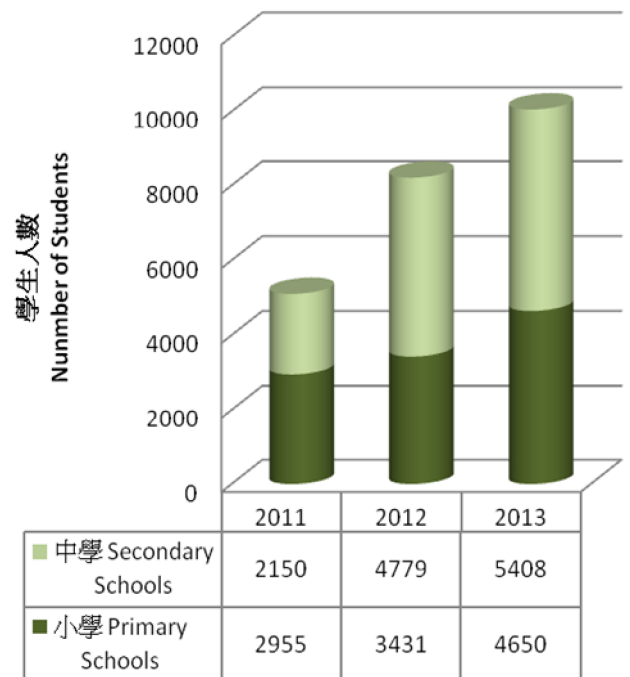
## Statistics Report – 5

### Heart Health Series 2011-2013 (School Exhibition and Talk)

學校心臟健康講座  
School Heart Health Talks



學校心臟健康展覽  
School Heart Health Exhibitions



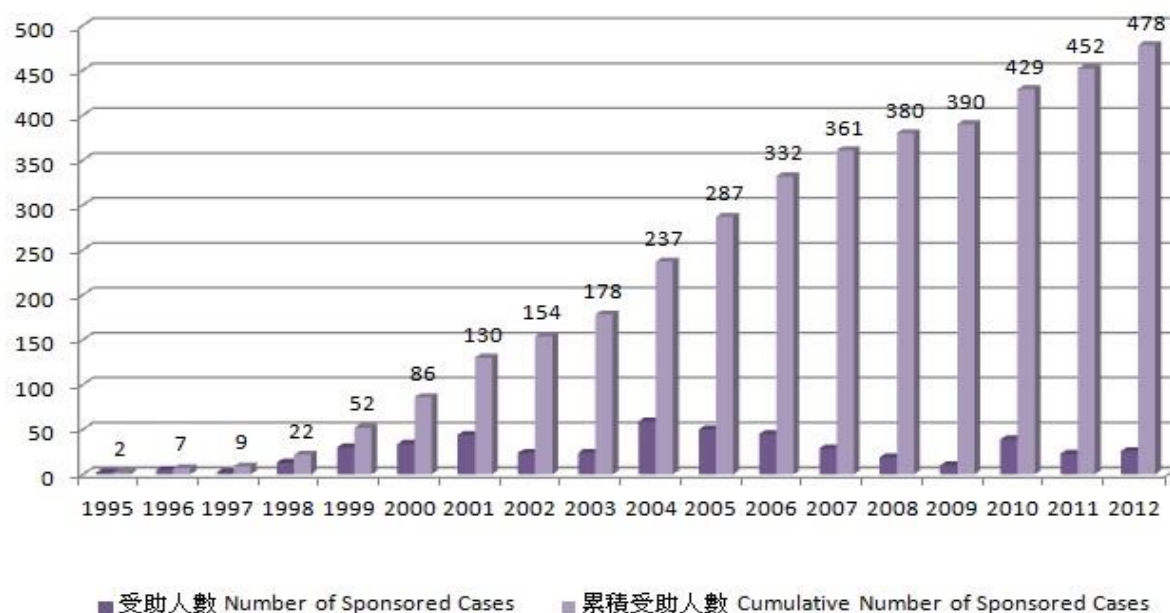
Remark: The campaign has introduced in May 2011.

# Children's Heart Foundation

## Statistics Report – 6

### Beneficiary in the Medical Treatment Sponsorship 1995-2012

Number of Beneficiary



	1995	1996	1997	1998	1999	2000	2001	2002	2003
Number of beneficiary	2	5	2	13	30	34	44	24	24
Cumulative Number of Sponsored	2	7	9	22	52	86	130	154	178
	2004	2005	2006	2007	2008	2009	2010	2011	2012
Number of Sponsored Cases	59	50	45	29	19	10	39	23	26
Cumulative Number of Sponsored	237	287	332	361	380	390	429	452	478

Remarks:

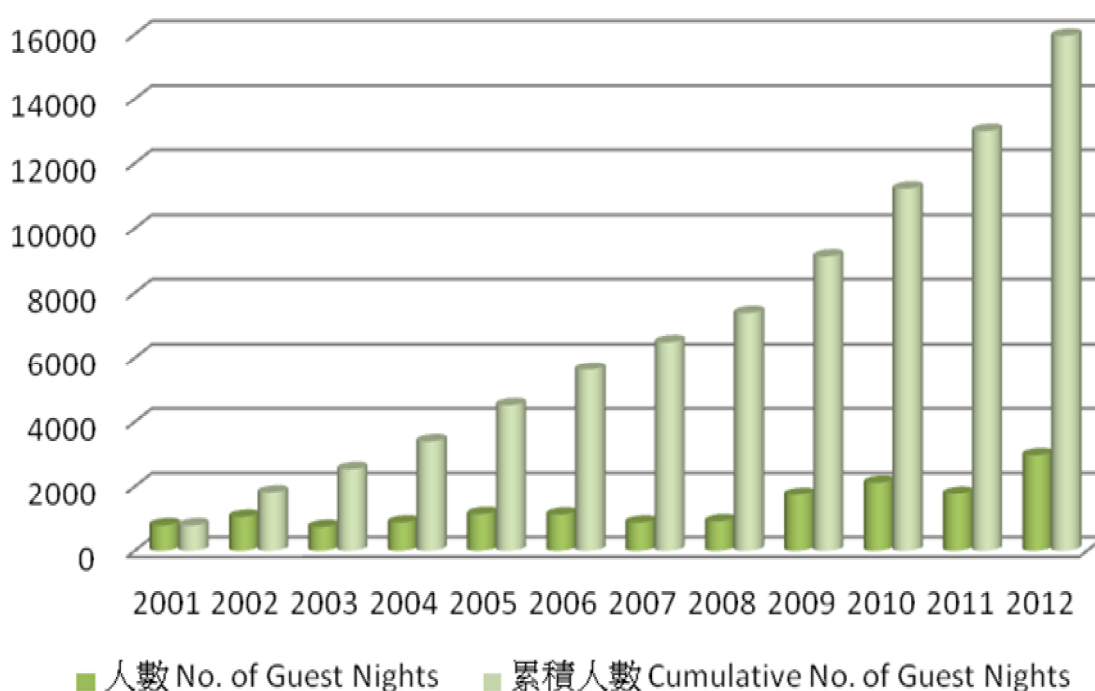
- 1) Medical Treatments mean Interventional Cardiac Catheterization, Pacemaker, Heart Valve (Homograft) and Nitric Oxide Treatments.
- 2) The Nitric Oxide Treatment was initiated by the CHF since 1999. The year of evidence proved the effectiveness of the treatment that the Government took up the responsibility from the CHF in 2007.s
- 3) Heart Valve Project was initiated by CHF in 2000. The numbers of beneficiary depends the supplies of heart valve.

# Children's Heart Foundation

## Statistics Report – 7

### Number of guest nights and cumulative guest nights at the House of the Heart 2001-2012

No. of Guest Night



	2001	2002	2003	2004	2005	2006
No. of guests night	775	1,036	723	860	1,119	1,105
Cumulative no. of guests night	775	1,811	2,534	3,394	4,513	5,618

	2007	2008	2009	2010	2011	2012
No. of guests night	858	899	1,734	2,110	1,768	2,963
Cumulative no. of guests night	6,476	7,375	9,109	11,219	12,987	15,950

Remark: The number of guests night is subjected to the number of operation of the Department of Pediatric Cardiology of hospital and relocation of the HOH



# Children's Heart Foundation

## Relocation Notice

Dear member,

In accordance with the Queen Mary Hospital re-development, as of 12<sup>th</sup> August 2013, the CHF office has been moved to Wong Chuk Hang temporarily. Meanwhile, the House of Heart (HOH) is closed pending its relocation to Wah Fu Estate. The HOH will be reopened by the end of 2013 when the fitting out work is completed.

As of now, the following addresses will be as listed:

1. CHF Mailing Address: Unit 419-424, Wah Kwong House, Wah Fu Estate, Hong Kong
2. CHF Office Address: Unit A3, 4/F, E Tat Factory Building, No.4 Heung Yip Road, Wong Chuk Hang, Hong Kong

We apologize for any inconvenience caused. Should you have any questions, feel free to contact us at 2553-0331.

Yours sincerely,

A handwritten signature in black ink, appearing to be '鄭映欣' (Cheng Yingxin), written in a cursive style.

Chairlady



