

# Children's Heart Foundation



## Annual Report 2006- 2007

---

Address: G/F, Main Block, Grantham Hospital,  
125 Wong Chuk Hang Road, Aberdeen,  
Hong Kong  
Tel: 2553 0331  
Fax: 2553 4886  
E-mail: [chf@childheart.org.hk](mailto:chf@childheart.org.hk)  
Website: [www.childheart.org.hk](http://www.childheart.org.hk)



# Children's Heart Foundation

## Contents

<b>Contents</b>	<b>Page</b>
Background	P.2
Organization Structure	P.3 - P.4
Message of Chairlady	P.5 - P.8
Notice of Annual General Meeting	P.9
Major Members' Activities 2006/2007	P.10 - P.11
Major Fundraising Activities 2006/2007	P.12 - P.13
Major Medical Exchange Programme 2006/2007	P.14
Statistics	P.15 - P.21
Report of Executive Committee	1 - 2
Report of The Honorary Auditor	3 - 4
Income and Expenditure Statement	5
Balance Sheet	6
Cash Flow Statement	7
Notes on the Financial Statements	8 - 16



# Children's Heart Foundation

## Background

The Children's Heart Foundation (CHF) is a registered charitable organization devoted to supporting children suffering from congenital heart disease. It was set up on 10<sup>th</sup> November 1994 by a group of concerned parents with children with congenital heart conditions.

## Objectives

1. To raise public awareness of congenital heart disease.
2. To provide financial and psychological support to families with children suffering from congenital heart disease.
3. To support the development of technology and methods to detect and treat congenital heart disease.

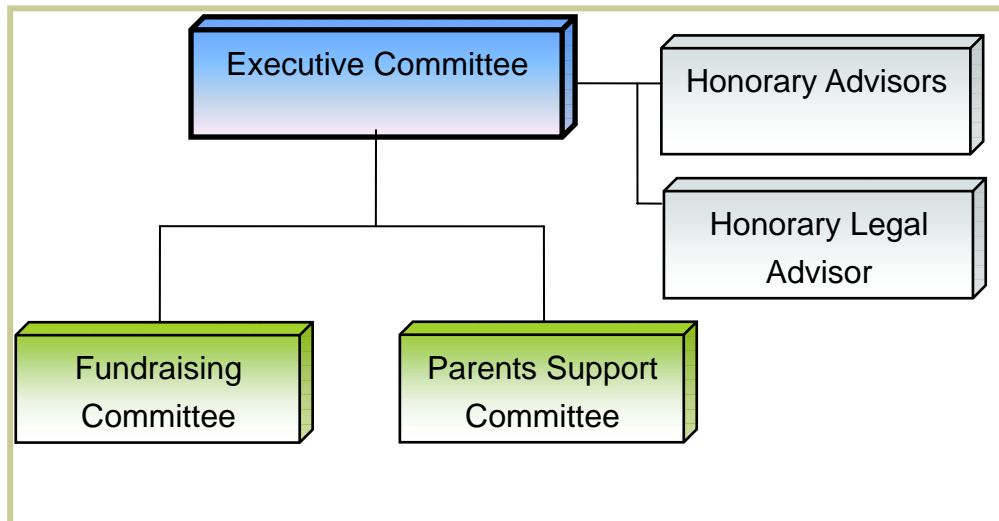
## Services

1. Financial support for treatment, including therapeutic catheterization and pacemakers.
2. Purchase of medical equipment.
3. Mutual support group for parents and patients.
4. Regular educational programs including seminars, talks and exhibitions on children's heart disease.
5. Overnight accommodation for parents of hospitalized children.
6. Programs to bring overseas surgeons or cardiologists to Hong Kong to share experience with local medical staff.
7. Sponsorship for research project in diagnosis and treatment of congenital heart disease.



# Children's Heart Foundation

## Organization Structure



### Executive Committee Members 2006-2007

Hon. Patron	: The Hon. Selina Chow
Chairlady	: Mrs. Rebecca Yung
Vice Chairman	: Dr. Maurice Leung
Secretary	: Mr. Jon Marsh
Treasurer	: Mr. Philip Elder
Members	: Dr. K.T. Chau
	: Ms. Au Wai Kwan
	: Ms. Christine Ho
	: Ms. Monica Woo
	: Dr. David Zweig
	: Ms. Angela Lau
	: Mr. Robert Footman
Hon. Advisors	: Dr. S. C. Leung
	: Mrs. Jenny Ho
Hon. Legal Advisor	: Mr. Andy Kung
Hon. Auditor	: KPMG



# Children's Heart Foundation

## Fundraising Committee 2006-2007

Chairman	: Dr. David Zweig
Members	: Ms. Michelle Lam
	: Ms. Amy Sung
	: Ms. Christie Wo
	: Ms. Anna Yau
	: Ms. Hilary Tsui

## Parents Support Committee 2006-2007

Chairwoman	: Mrs. Jenny Ho
Members	: Ms. Helen Ho
	: Ms. Koon Kit Kwan
	: Ms. Christine Ho
	: Ms. Cheung Sau Ping
	: Ms. Chan Yuk Yin
	: Ms. Connie Lau
	: Ms. Lai Hing Ling
	: Ms. Dora So
	: Mr. Leung King Sing
	: Ms. Lolitter Ng



# Children's Heart Foundation

## Message of Chairlady

### Care • Support • Unity

I am pleased to report that we have had a fruitful and successful year filled with meaningful and challenging events.

In an effort to build greater awareness about congenital heart disease in the local community, we have invited Miss Ella Koon, a celebrated artist and singer, to be a CHF Ambassador. Being a congenital heart disease patient who underwent heart surgery at a tender age, Ella has deep empathy with our members and shares our mission to promote the welfare of children with congenital heart disease. Some of our children performed with Ella at the Charity Gingerbread Masterpiece Exhibition and Holiday Festivity 2006. She will join us at future events.

The past year had seen the introduction of a number of new projects that provide different kinds of training and social skills to our members. Examples include the Ward Visit by Disneyland, Mosaic Workshop, Cookie Making & Giving Activity and Tai Chi Class. Some of these events were tailor-made specially to build confidence and self esteem in our children. Others involved both parents and siblings and were highly successful in boosting family relationships. We have worked not only for the medical well being of our members, but also to help them lead a quality life.

It is my pleasure to acknowledge the achievements of our Children's Choir. The children have been participating enthusiastically and practicing hard in rehearsals and their standard of performance is simply fabulous. One such occasion was the fashion show at the Charity Ladies'



# Children's Heart Foundation

## Message of Chairlady

Luncheon, which was warmly received by the audience. I must extend a heartfelt 'Thank You' to Mr. Simon Cheng and Ms. Christine Yip for dedicating their time and effort in coaching the CHF choir.

In line with our mission, we have dedicated near 70% of our funding to medical support. Apart from our regular subsidies for catheters, pacemakers and new medical equipment, we are working on a long-term development project for the training and retention of medical staff specialized in congenital heart disease. Moreover, we have continued the sponsorship programme to invite local specialists in private practice to carry out surgery on children with complicated heart diseases. Several medical exchanges have taken place between local medical staff and Dr. Victor Tsang, a leading surgeon from the UK. Such efforts have not only benefited our members, they have also helped in promoting the standard of paediatric cardiac practice in Hong Kong in the long run.

This year has seen considerable effort going into fund raising. We have expanded our network and received support from a wide variety of companies, associations and individuals. Most notably, the annual charity walk, which took place in October, attracted over 3,000 participants, the largest walk we have ever had.

None of these activities would have been possible without the support of our members, donors and friends. I thank each and every one of you for dedicating your time and effort to the development of the CHF.



# Children's Heart Foundation

## Message of Chairlady

In particular, I would like to express my heartiest gratitude to our close partner - Nu Skin Enterprise (HK) Inc. The Nu Skin Children's Heart Programme Committee has successfully utilized its resources and manpower to raise fund for the CHF. Likewise, our long-term donors, including the Standard Chartered Bank (HK) Ltd, Ritz Carlton, Mattel (HK) Ltd, HKTravelor.com Ltd and Goldman Sachs, have also given us their unswerving support in various programmes.

My sincere thanks also go to a number of new but very caring sponsors and donors, namely, the British Chamber of Commerce, Rabobank Hong Kong, LCDP, BUPA, Discovery Bay Residents Club, OVO Garden, Kiehl's and Herbs Generation International Ltd. Together, we have carried out a number of highly creative and interesting fund-raising projects.

I would like to take this opportunity to thank all Executive Committee members. Despite their career and family commitments, each Exco member has been serving the CHF wholeheartedly in their different capacities on a voluntary basis. They have taken care of many operational issues and helped to make complex situations easy to deal with. Their concerted efforts and selfless contributions will certainly help the CHF's healthy development. Here is my personal thanks to the Exco. It has been great to work with you all!

I would like to give my deepest appreciation to Dr Maurice Leung who needs little introduction. Dr Leung was one of the founding members of the CHF and had been serving on the Executive Committee ever since. Over the years he had introduced a number of valuable projects that had benefited





# Children's Heart Foundation

## Message of Chairlady

many children. Due to his heavy workload and other commitments, I am sorry to announce that Dr. Leung had decided to step down from the Executive Committee this year. I would like to thank him for the long and dedicated service he had made to the CHF and sincerely wish that he will join us again in the future.

You will see from this report that with an increasing number of projects and programmes, our full-time and part-time staff are fully stretched with added responsibilities. On behalf of the CHF, I would like to commend and thank, in particular, Yasmin, Timsik and Bonnie, for all their hard work which has led to the smooth operation of our organisation.

Thank you for joining us today!

Rebecca Yung



# Children's Heart Foundation

## Notice of Annual General Meeting

NOTICE is hereby given that an Annual General Meeting of the Foundation will be held at Metropol Restaurant at 4th Floor, United Centre, No.95 Queensway, Admiralty, Hong Kong at 3:30 p.m. on Saturday, the 25<sup>th</sup> day of August 2007 for the following purposes :

1. To consider and approve the Audited Accounts of the Foundation for the period from 1st January 2006 to 31st December 2006 together with the Executive Committee's and Auditor's Reports attached thereto;
2. To elect Executive Committee Members;
3. To appoint KPMG as Honorary Auditors; and
4. To transact any other competent business.

By Order of the Executive Committee

A handwritten signature in black ink, appearing to read 'Jonathan Marsh'.

---

Secretary (Jonathan Marsh)

Date : 26 Jul 2007

A Member entitled to attend and vote at the Meeting is entitled to appoint a proxy to attend and vote on his behalf. A proxy need not be a Member.



# Children's Heart Foundation

## Major Members' Activities 2006/2007

### Year 2006

Month	Events
Feb	Farewell Dinner for Mr. Pescod & Lunar New Year Gathering
Mar	Seminar on Interventional Cardiac Catheterization
Mar-May	CHF Children's Choir (Phase 1)
Apr	Smiling Face
Apr	Happy Easter + BBQ
Apr	Ward Visit by Disneyland
Apr - May	Cooking Class for Children
Jun	An Arty party
Jul – Aug	Art Class in Hospital
Jul - Dec	CHF Children's Choir (Phase 2)
Aug	Nuskin Game Day for Children with Heart Disease
Aug	Summer Camp 06
Aug	Interview with Hong Kong Broadband
Aug	Annual General Meeting 2005/2006
Oct	Annual Exhibition on Children's Heart Health
Nov	Volunteer gathering
Dec	Disney's Magical Christmas 2006
Dec	CHF Christmas Party 2006



# Children's Heart Foundation

## Major Members' Activities 2006/2007

### Year 2007

<b>Month</b>	<b>Events</b>
Jan	DIY Handicraft Workshop
Mar	Lunar New Year Gathering
Mar	Nuskin Golf Relaxing Day
Mar - Jun	CHF Children's Choir
Apr	Mosaic Workshop
Jul	Summer Camp in Shaolin Centre
Jul	Cookie Making and Giving Activity
Jul - Aug	Tai Chi Class
Jul - Aug	Summer Interactive Tutorial Class
Jul	Summer Drama Show
Aug	Summer Drama Show



# Children's Heart Foundation

## Major Fundraising Events 2006/2007

### Year 2006

Month	Events
Jan	NE Mountain Marathon 2006
Jan	Corporation Donation Project 2006
Feb	Donation from Opening of Dr. Leung's Office
Mar	The Standard Chartered Bank 2006 British Chamber Annual Ball
Apr	Colour for a Good Cause
Apr	Stars & Strikes' Hiking for CHF
Apr	Donation in memory of Mrs. Davey
May	CHF Charity Ladies Luncheon 2006
Jul	Time Warner Market Day 2006
Jul	2006-07 Nu Skin Children's Heart Program
Jul	Rabobank's Exhibition and Charity E-card
Jul	Charity Sale with Smart Kids Club
Jul - Sep	LCDP Art event and Charity Sale
Sep	Bill Insert Campaign – Towngas
Oct	Good Cause of BUPA for 30th Anniversary
Oct	Heart-to-Heart Charity Walk 06
Oct	Discovery Bay Tennis Tournament
Dec	Ritz Carlton Gingerbread Masterpieces Exhibition and Holiday Festivity
Dec	Charity Gift Wrapping Campaign



# Children's Heart Foundation

## Major Fundraising Events 2006/2007

### Year 2007

<b>Month</b>	<b>Events</b>
Jan	NE Mountain Marathon 2007
Feb	OVO charity Valentine Programme
Feb	Donation in memory of Mr. Harry Steven
Apr	Kiehl's charity programme
Apr	CHF Charity Ladies Luncheon 2007
Apr	Interview with Herbs
May	Herbs' charity sale
Aug	Charity Chinese Opera Concert



# Children's Heart Foundation

## Major Medical Exchange Programme 2006/2007

### Year 2006

Oct 2005- Sep 2006	CHF Sponsorship Programme 2006 – Dr. Clement Chiu Shui-wah
Jun 2006	CHF Medical Exchange Programme – Dr. Victor Tsang
Dec 2006	CHF Medical Exchange Programme – Dr. Victor Tsang

### Year 2007

Oct 2006- Sep 2007	CHF Sponsorship Programme 2007 – Dr. Clement Chiu Shui-wah
May 2007	CHF Medical Exchange Programme – Dr. Victor Tsang

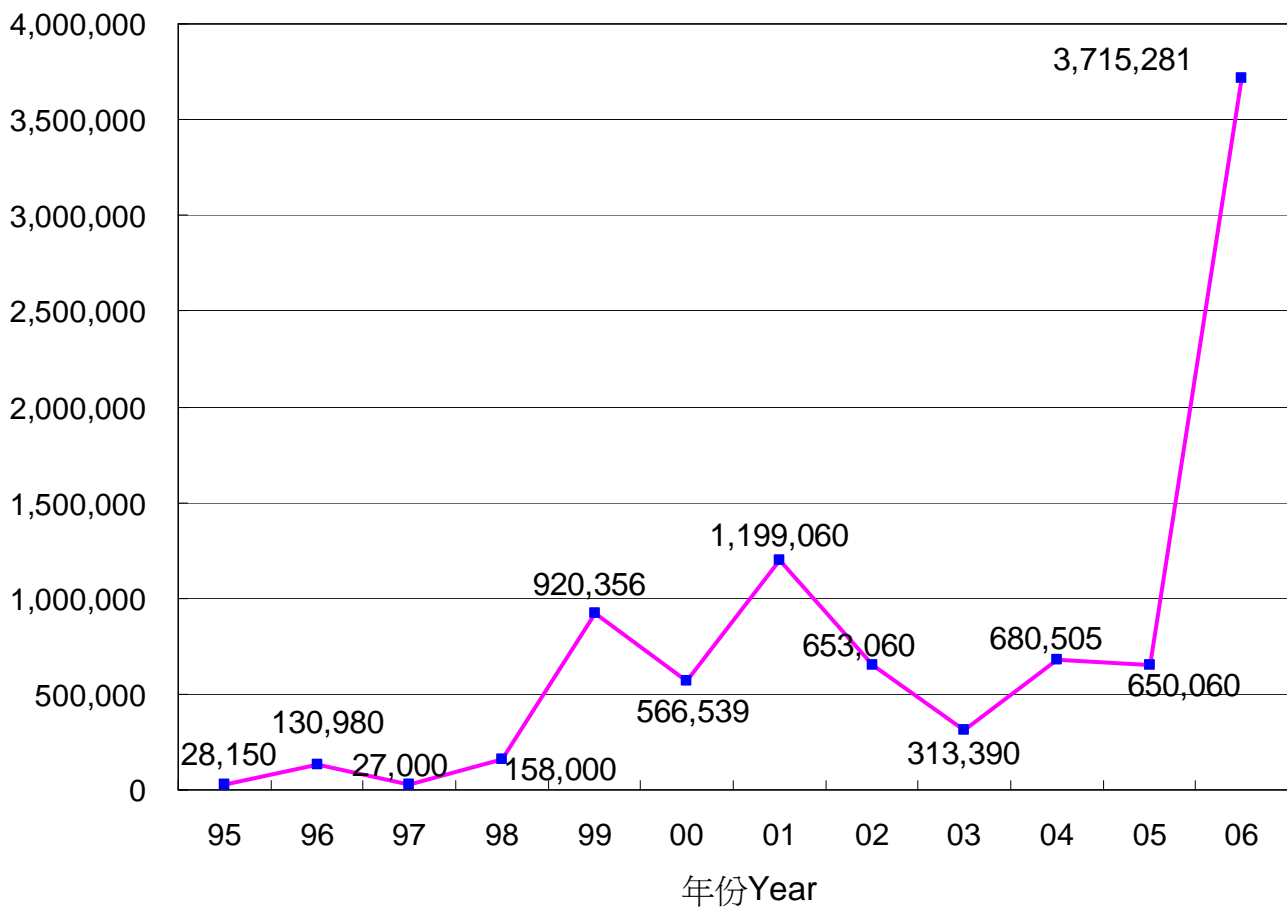


# Children's Heart Foundation

## Statistics

### Expenditure on Sponsorship for Medical Treatment & Equipment

金額Amount



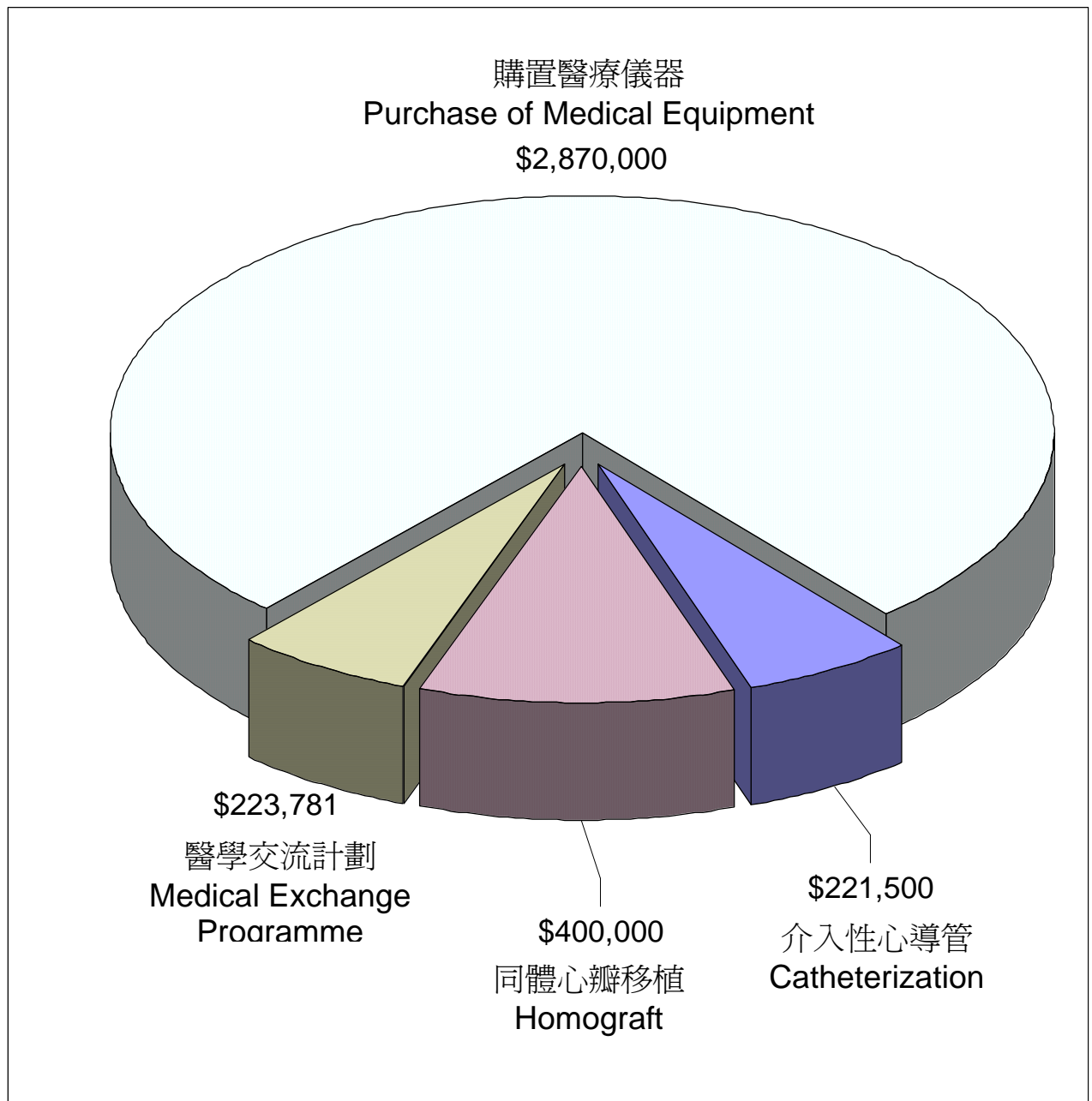




# Children's Heart Foundation

## Statistics

### Distribution of Sponsorship on Medical Aspects in 2006

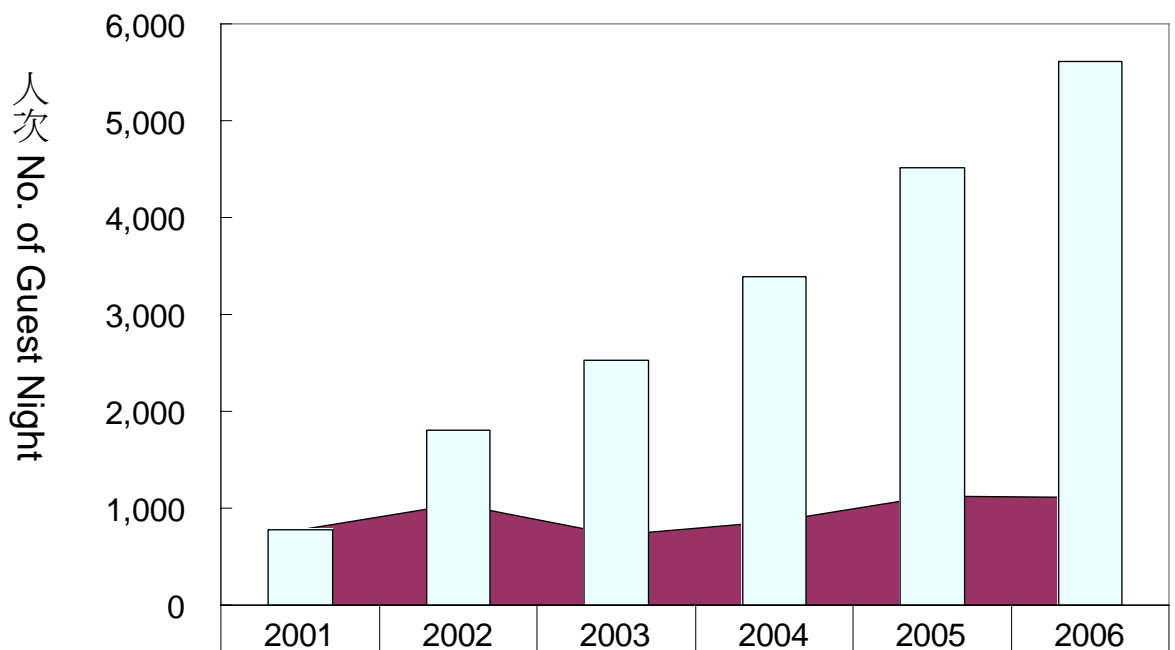




# Children's Heart Foundation

## Statistics

### Number of Guest Nights & Cumulative Guest Nights of House of the Heart



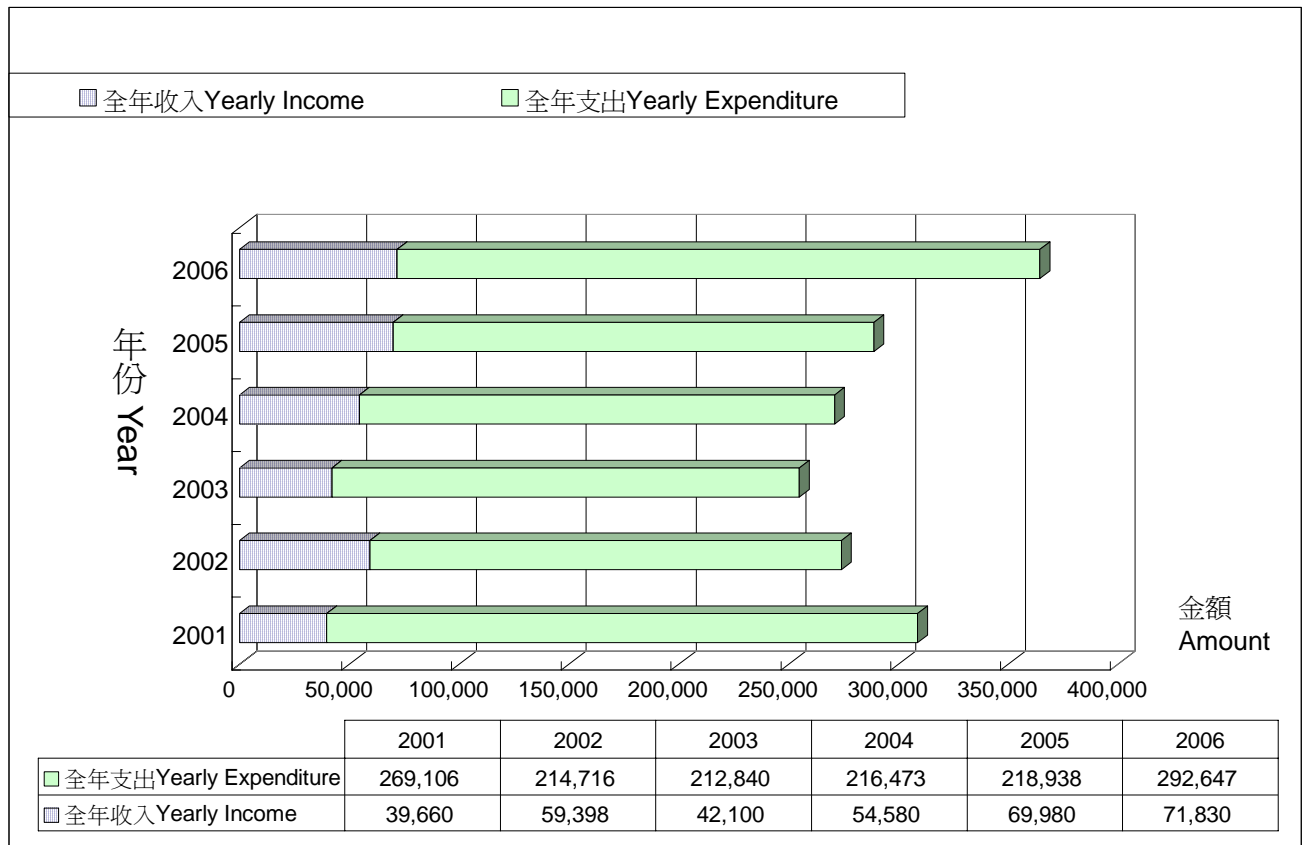
■ 使用人次Number of Guest Nights	775	1,036	723	860	1,119	1,105
□ 慮積使用人次Cumulative Number of Guest Nights	775	1,811	2,534	3,394	4,513	5,618



# Children's Heart Foundation

## Statistics

### Income and Expenditure of House of the Heart

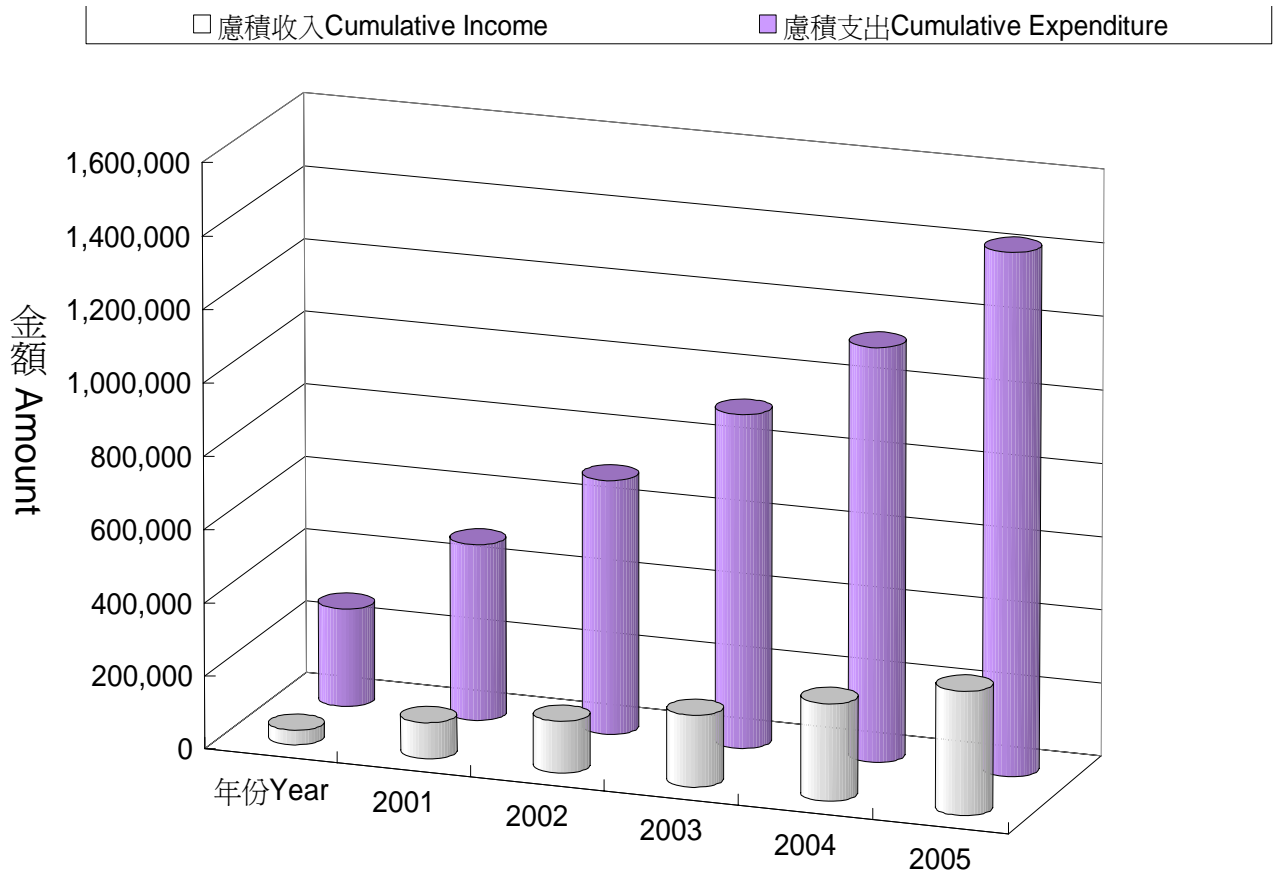




# Children's Heart Foundation

## Statistics

### Cumulative Income and Expenditure of House of the Heart



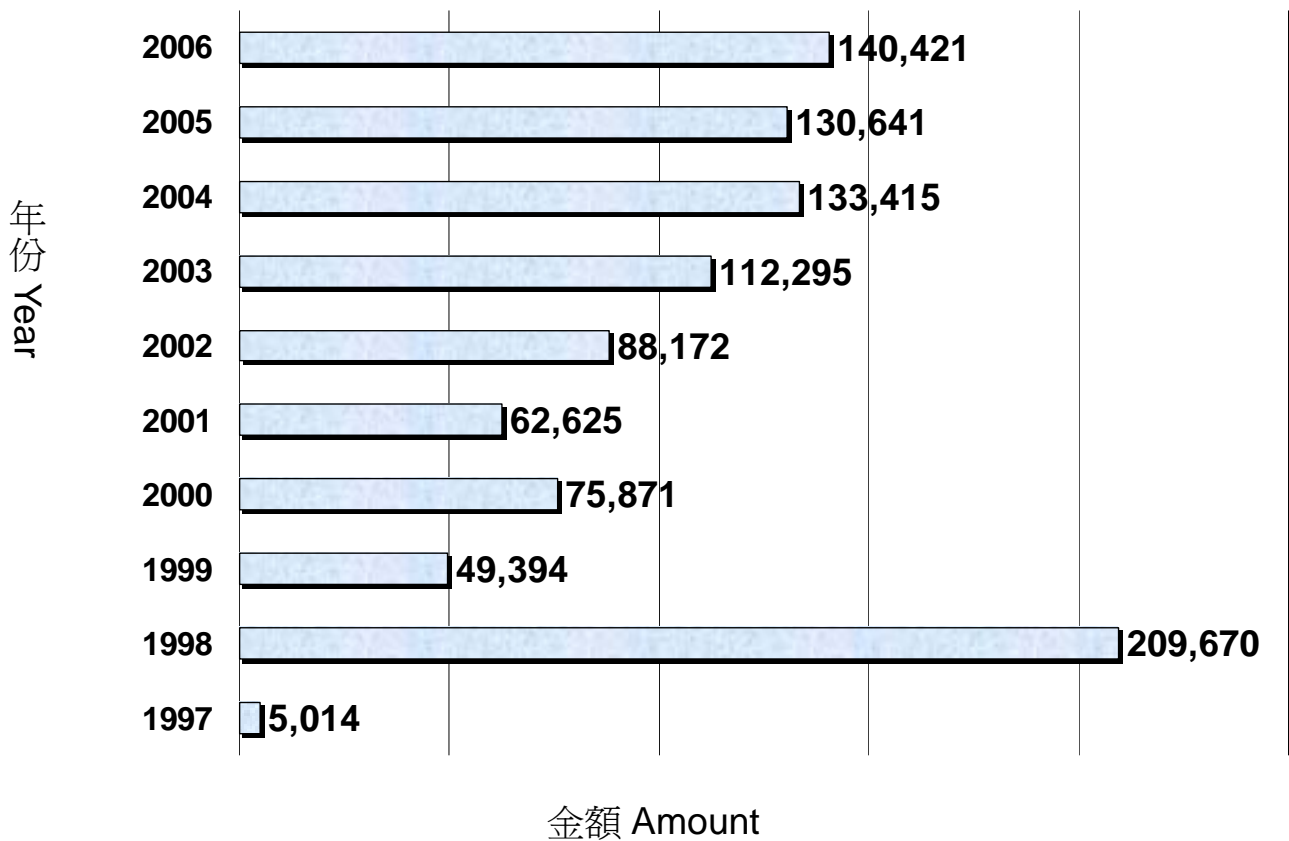
年份Year	2001	2002	2003	2004	2005	2006
慮積支出Cumulative Expenditure	269,106	483,822	696,662	913,135	1,132,072	1,424,720
慮積收入Cumulative Income	39,660	99,058	141,158	195,738	265,718	337,548



# Children's Heart Foundation

## Statistics

### Expenditure on Educational Programme & Members' Activities





# Children's Heart Foundation

## Statistics

### District of Annual Exhibition on Children's Heart Health



	年份 Year	Location 地點
1.	1998	葵芳 Kwai Fong & 太古城 Tai Koo Shing
2.	1999	九龍灣 Kowloon Bay
3.	2000	馬鞍山 Ma On Shan
4.	2001	沙田 Shatin
5.	2002	將軍澳坑口 Tseung Kwun O Hung Hau
6.	2003	屯門 Tuen Mun
7.	2004	青衣 Tsing Yi
8.	2005	奧海城 Olympian City
9.	2006	將軍澳寶林 Tseung Kwan O Po Lam